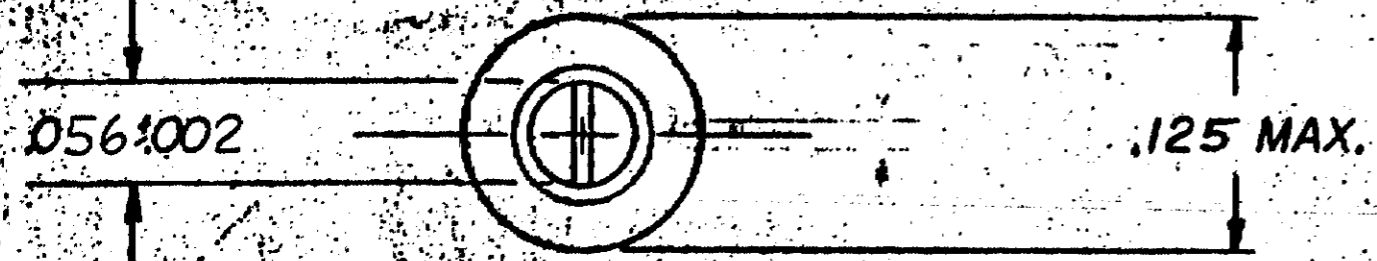


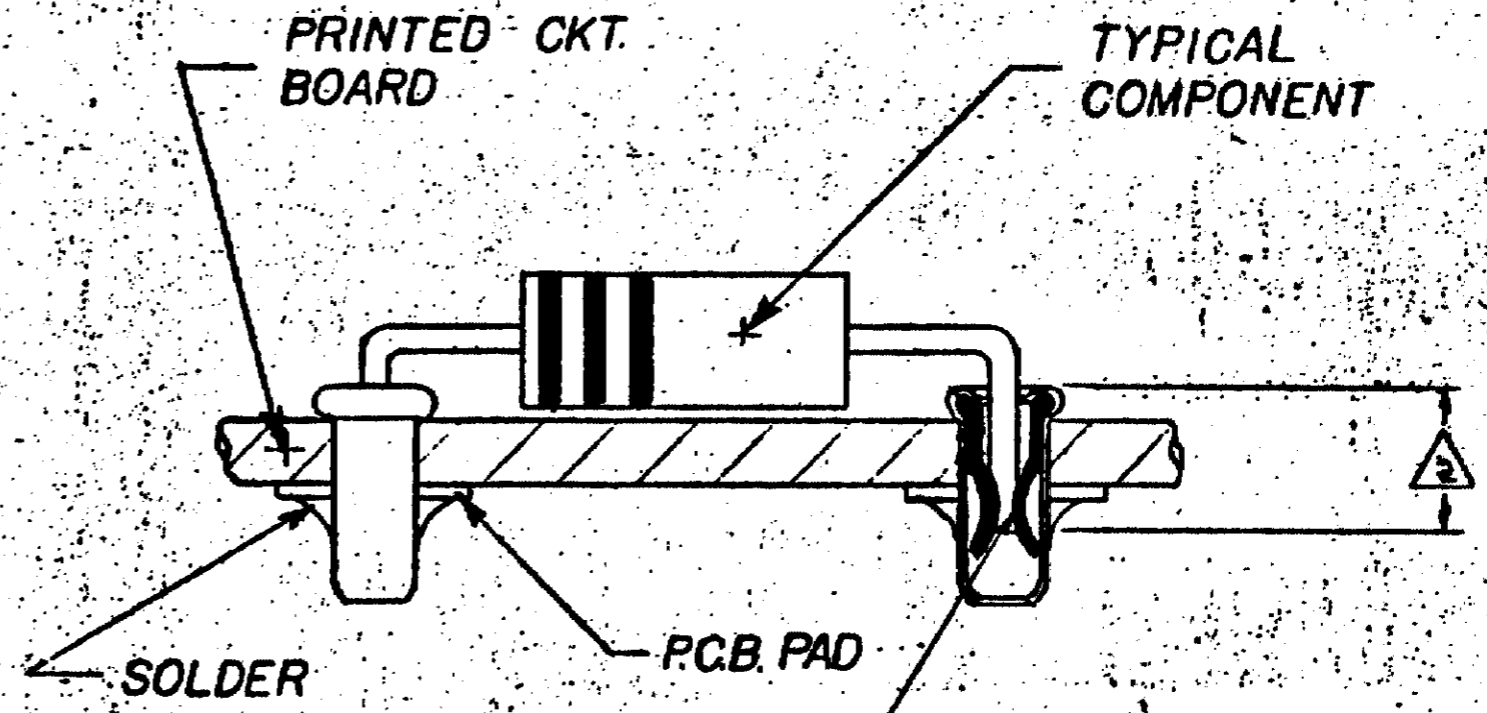
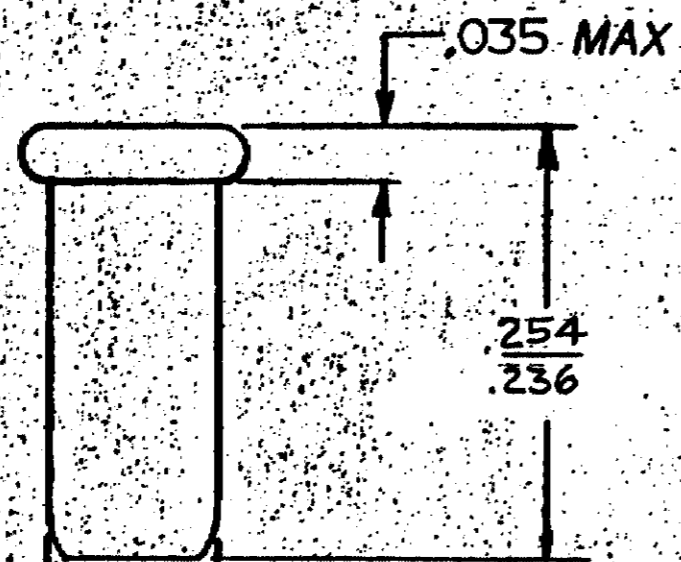
© COPYRIGHT 1975 BY AMP INCORPORATED, HARRISBURG, PA.
 ALL INTERNATIONAL RIGHTS RESERVED. AMP INCORPORATED PRODUCTS
 COVERED BY U. S. AND FOREIGN PATENTS AND/OR PATENTS PENDING.
 UNPUBLISHED NOR REPRODUCED WITHOUT WRITTEN PERMISSION
 - AMP INCORPORATED

P	LTR	DESCRIPTION	DATE	APPROVED
✓	G	REV PER AG-2446	8-30-91	CW

REVISIONS						
P	F	ZONE	LTR	DESCRIPTION	DATE	APPROVED
			E	ADD -2 PER TTI 83-103	9-8-81	TEB/KW
✓			E1	RESTORATION	5-23-85	46/SJ
✓			F	REV AG 1047 LOC TO CY1	12-22-87	SDM
✓			F1	REV PER AG-5173 LOC TO AG	4-4-88	151/PM



- ACCEPTS .0035 TO .0054 DIA. LEADS
- 0.145 MIN. INSERTION DEPTH FOR RELIABLE CONTACT OF COMPONENT LEAD.
- GOLD STRIPE .00003 INCH THICK IN CONTACT AREA OF SPRINGS, GOLD FLASH ON REMAINDER OF SPRINGS.



$\frac{.089}{.086}$ ← FITS INTO #43 DR. HOLE FOR HAND INSERTION & #44 DR. HOLE FOR MACHINE INSERTION.

TIN-LEAD	GOLD	640206-2
TIN-LEAD	TIN	640206-1
CUP	SPRING	PART NO
PLATING		

UNLESS OTHERWISE SPECIFIED DIMENSIONS ARE IN INCHES. TOLERANCES ON: DECIMALS ±.015 ANGLES ±	CONTRACT NO	
	DR	G YETTER 3-18-75
	CHKD	B. Williams 8-21-75
	APPD	
	APPD	
MATERIAL CUP: COPPER SPRING: BR. CU.	DSGN APPD	B.C. Williams 8-21-75
FINISH SEE ABOVE	OTHER APPD	

AMP INCORPORATED Harrisburg, Pa.		
NAME REUSABLE COMPONENT RECEPTACLE		
SIZE B	CODE IDENT NO 00779	NUMBER 640206
SCALE	SHEET	