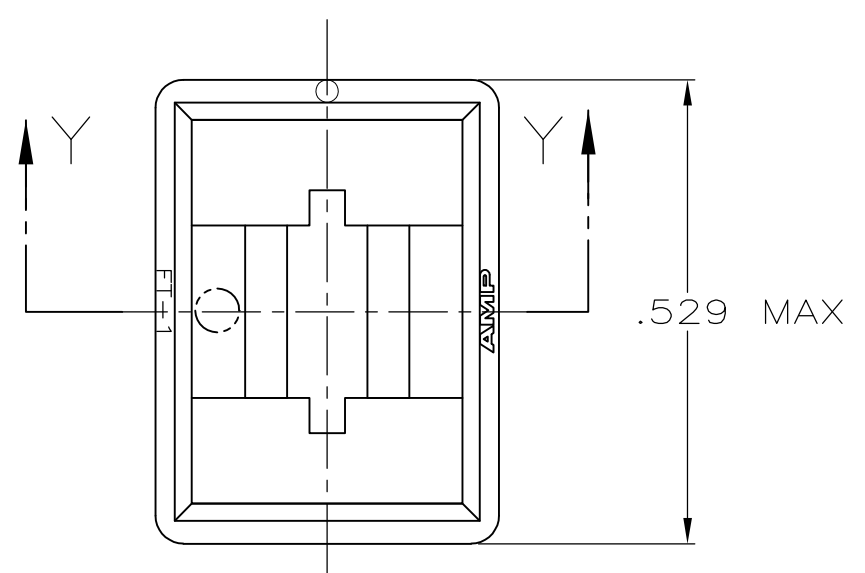
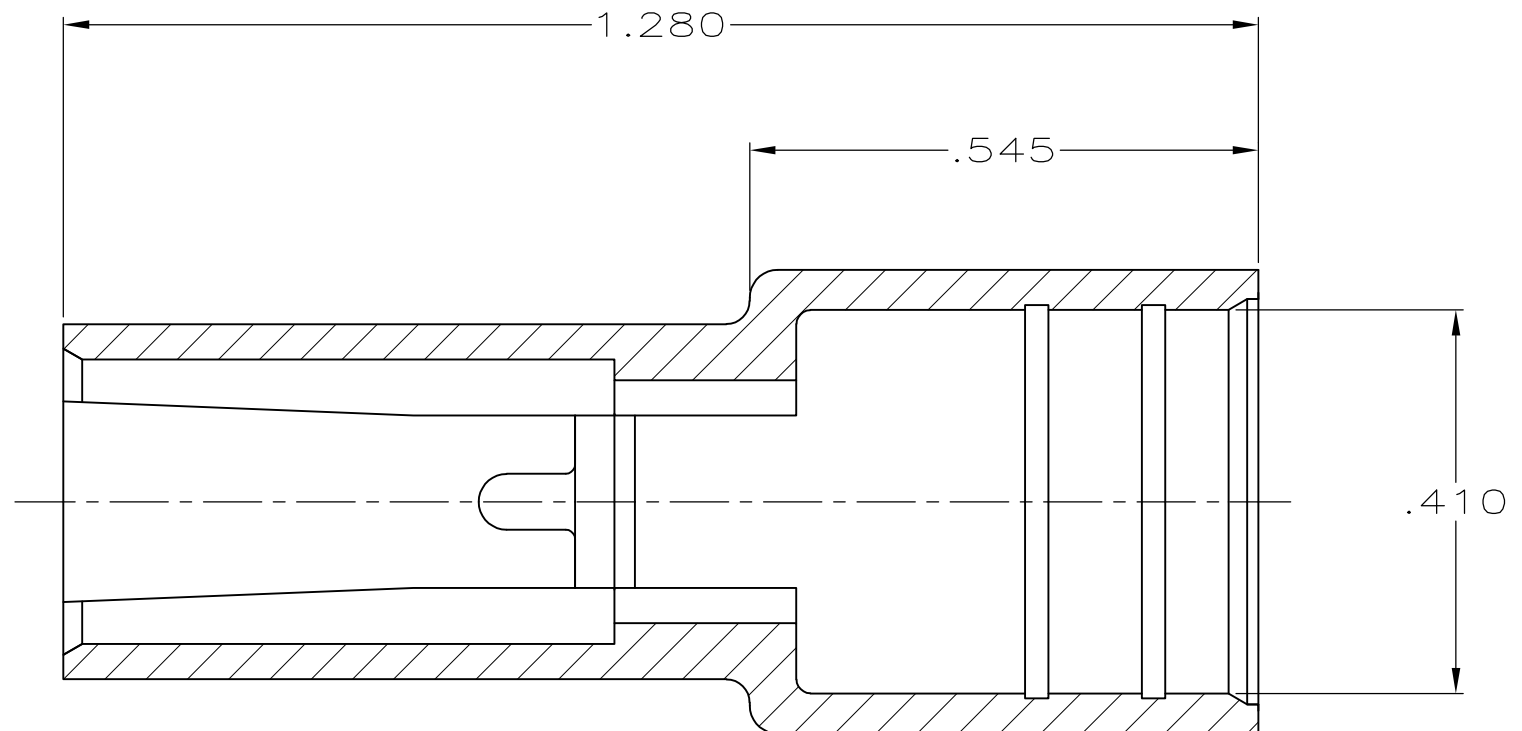
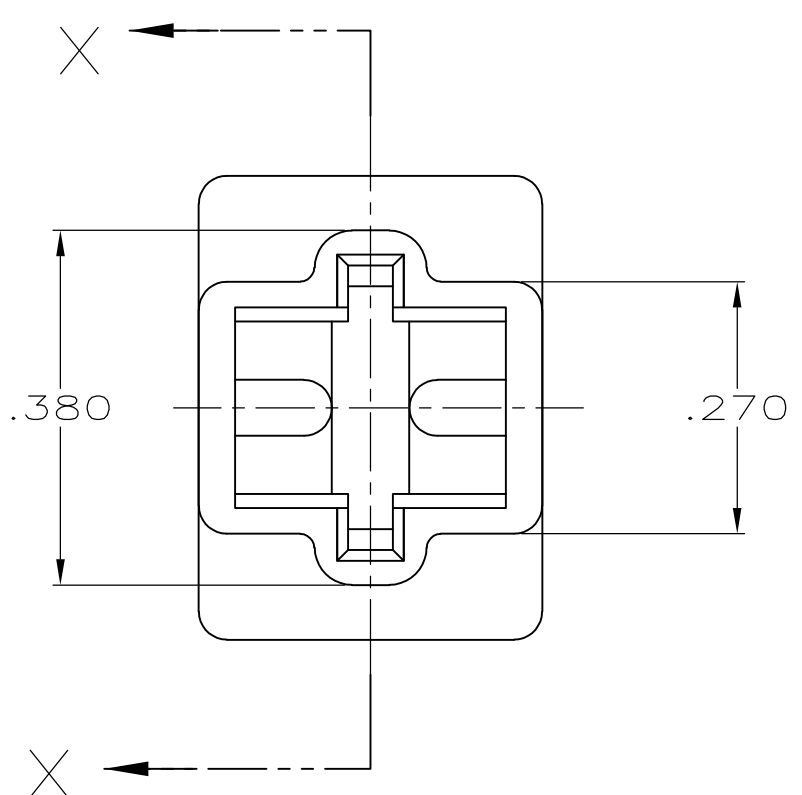
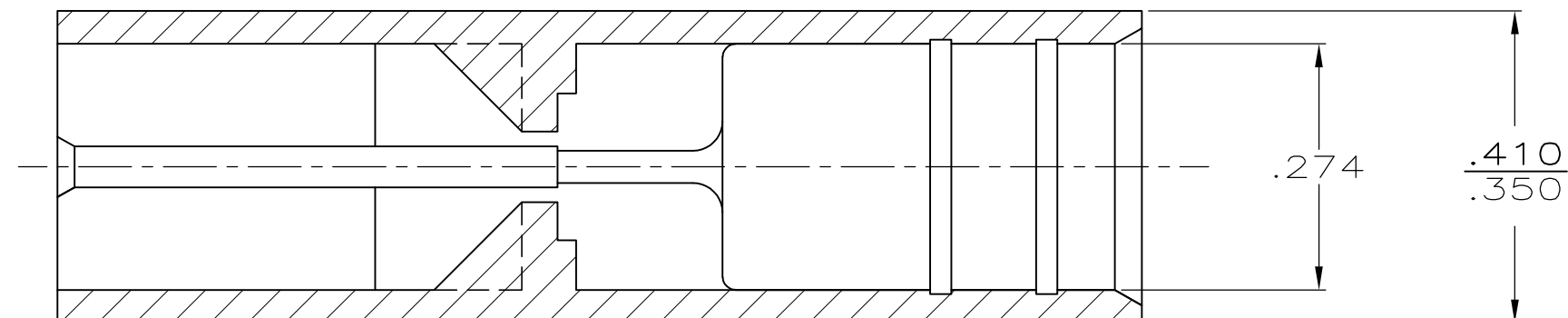


LOC		DIST		P		F		ZONE		LTR		REVISIONS			
AF		50										DESCRIPTION	DATE	APPD	
												AE	OBS -2 PER 0G3A-0656-01	21FEB02	JR/ND
												AE1	REVISED PER ECO-09-021826	04SEP09	AEG



SECTION X-X



SECTION Y-Y
ROTATED 90° CW

1 OBSOLETE PARTS: OBSOLETE CIS STREAMLINING PER D.RENAUD/D.SINISI

1	OBSOLETE	BLACK	4/6 NYLON UL 150° C	1-480053-0
	OBSOLETE	DYED GREY	6/6 NYLON	480053-9
	OBSOLETE	DYED PINK	6/6 NYLON	480053-8
	SUPERSEDED BY 480053-3	DYED BLUE	6/6 NYLON	480053-7
	SUPERSEDED BY 480053-3	DYED GREEN	6/6 NYLON	480053-6
		RED	6/6 NYLON	480053-5
		BLACK	6/6 NYLON	480053-4
		NATURAL	6/6 NYLON	480053-3
	SUPERSEDED BY 480053-4	BLACK	CYCOLAC	480053-2
	SUPERSEDED BY 480053-3	CLEAR	TENITE	480053-1

	COLOR	MATERIAL	PART NO
DO NOT SCALE PRINT. UNLESS SPECIFIED DIMENSIONS IN mm [INCHES] TOLERANCES ON :	DR 3/10/94 JR RUTH	AMP Incorporated Harrisburg, PA 17105-3608	
2 PLC DEC ± -	CHK 3/10/94 MS FEHER		
3 PLC DEC ± .015	APPD 3/10/94 R BEAVER	NAME	
ANGLES ± -	APPD 3/10/94 R REINER	HOUSING, TAB, FASTIN-FASTON, .250 SERIES	
MATERIAL	PRODUCT SPEC	SIZE	CAGE CODE
SEE TABLE	-	C	00779
FINISH	APPLICATION SPEC	DRAWING NO	C= 480053
SEE TABLE	-	SCALE	SHEET
	WEIGHT	5:1	10F 1

THIS DRAWING IS A CONTROLLED DOCUMENT FOR AMP INCORPORATED. IT IS SUBJECT TO CHANGE AND THE CONTROLLING ENGINEERING ORGANIZATION SHOULD BE CONTACTED FOR THE LATEST REVISION.