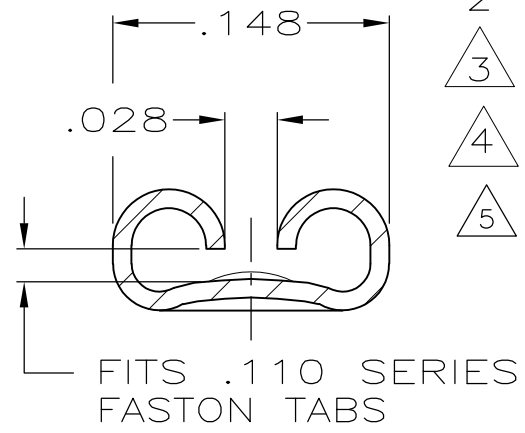
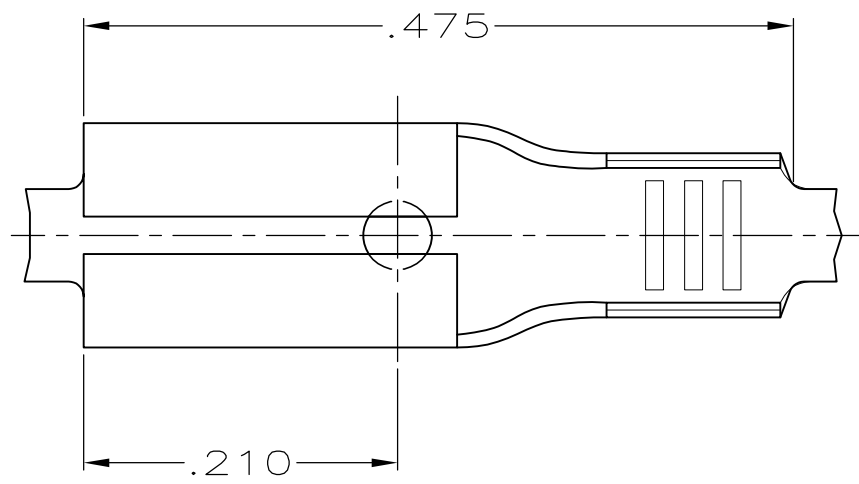


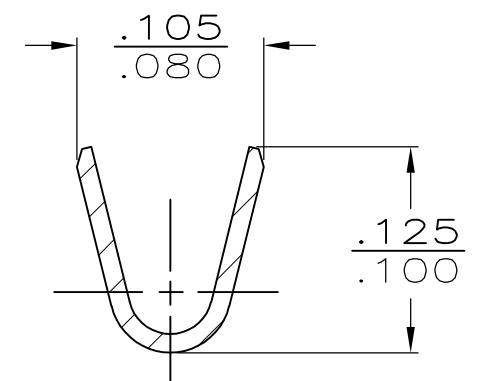
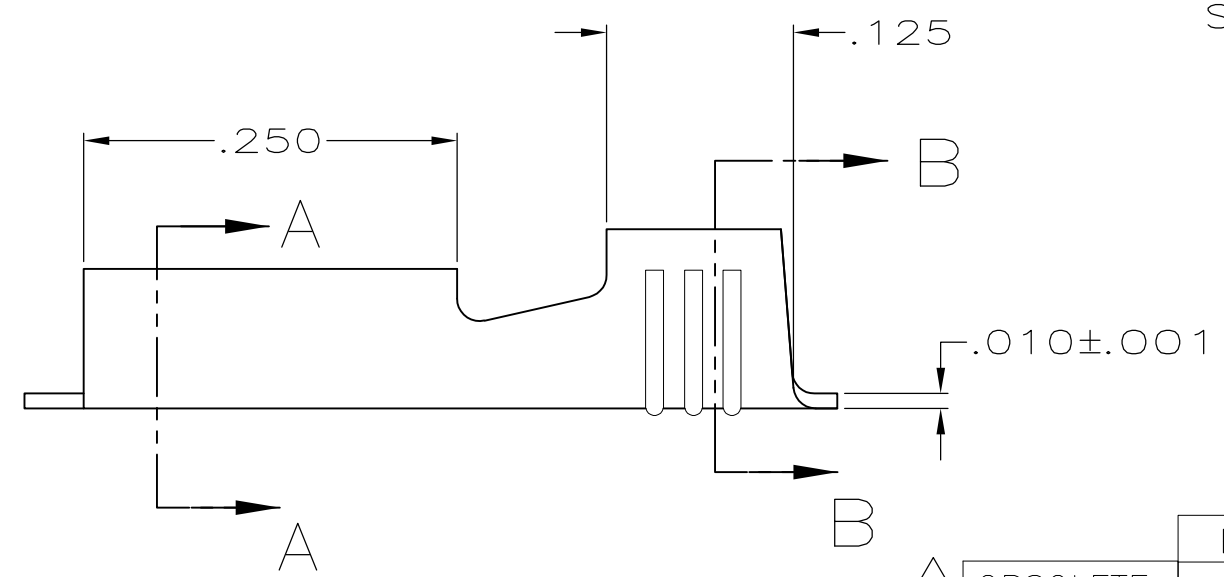
THIS DRAWING IS UNPUBLISHED. RELEASED FOR PUBLICATION ,19
 © COPYRIGHT 19 BY AMP INCORPORATED. ALL INTERNATIONAL RIGHTS RESERVED.

LOC AF DIST 50 P F

REVISIONS				
ZONE	LTR	DESCRIPTION	DATE	APPD
V		ADDED -5 PER 0G3A-0128-00	24FEB00	JR/PD
V1		REVISED PER ECO-09-020774	24AUG09	KK AEG



SECTION A-A
SCALE 10:1



SECTION B-B
SCALE 10:1

- 1 CONTINUOUS STRIP ON REELS
- 2 FEED TO BE .535±.005.
- △3 REVERSE REELING W/ PAPER INTERLEAVING
- △4 PRELIMINARY - NOT FOR PRODUCTION
- △5 OBSOLETE PARTS: OBSOLETE CIS STREAMLINING PER D.RENAUD/D.SINISI

△5 OBSOLETE PRE-TIN - PRE-TIN FINISH	20-18 or (2) #20's	.020	△3 △4 42399-5 42399-2 42399-1
	WIRE SIZE	MATING TAB THK ±.001	PART NO
	DO NOT SCALE PRINT. UNLESS SPECIFIED DIMENSIONS ARE IN INCHES TOLERANCES ON: 2 PLC DEC ± - 3 PLC DEC ± .015 ANGLES ± - MATERIAL #4H BRASS FINISH SEE TABLE	DR 4/1/91 JR RUTH CHK 4/1/91 MS FEHER APPD 4/1/91 C MEYERS APPD 4/1/91 D REINER PRODUCT SPEC - APPLICATION SPEC - WEIGHT -	AMP AMP Incorporated Harrisburg, PA 17105-3608 NAME RECEPTACLE, FASTON, .110 SERIES SIZE B CAGE CODE 00779 DRAWING NO 42399 SCALE 8:1 SHEET 1 OF 1