

THIS DRAWING IS UNPUBLISHED. RELEASED FOR PUBLICATION
 © COPYRIGHT BY TYCO ELECTRONICS CORPORATION. ALL INTERNATIONAL RIGHTS RESERVED.

| LOC | DIST | REVISIONS | | | |
|-----|------|---------------------------|---------|-----|------|
| P | LTR | DESCRIPTION | DATE | DWN | APVD |
| FT | 0 | | | | |
| | A | REVISED PER ECO-08-029240 | 22NOV08 | HMR | MS |
| | A1 | REVISED PER ECO-09-020689 | 27AUG09 | KK | AEG |

#5-20 SELF TAPPING SCREW
 QTY=2

12.70^{+0.00}_{-1.27}
 [.500^{+0.000}_{-.050}]

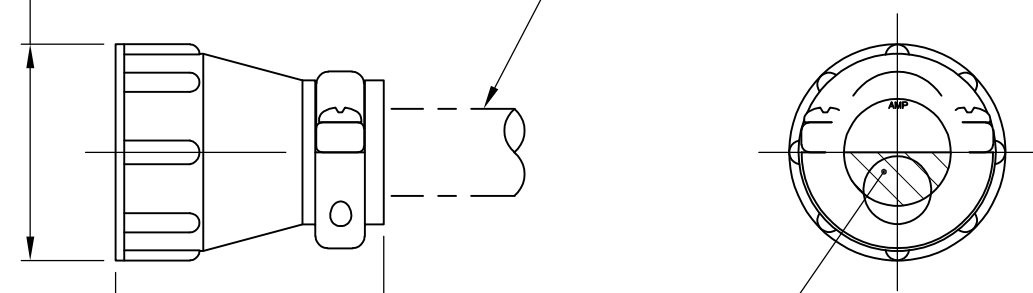
2
 CABLE CLAMP INSERT

CABLE CLAMP BODY

- 1 CABLE CLAMP BODY AND INSERTS: NYLON, BLACK. SCREWS: CARBON STEEL.
- 2 CABLE CLAMPING AREA ADJUSTABLE FROM 0.25 [.010] TO 4.09 [.161] SQ AREA BY REVERSING OR CHANGING CLAMPING INSERTS.
- 3 11.51 [.453] MAXIMUM CABLE OUTSIDE DIAMETER.
- 4 SCREWS: ZINC PLATE, NON-HEXAVALENT COATING.
- 5 OBSOLETE PARTS: OBSOLETE CIS STREAMLINING PER D.RENAUD/D.SINISI

ø28.63±0.64
 [1.127±.025]

3
 CABLE SUPPLIED BY CUSTOMER



2
 CLAMPING AREA

ASSEMBLED VIEW

| SCREW FINISH | PACKAGING | PART NUMBER |
|--------------|------------|-------------|
| 4 | BULK | 213904-4 |
| 4 | INDIVIDUAL | 213904-3 |
| 4 | BULK | 213904-2 |
| 4 | INDIVIDUAL | 213904-1 |
| 5 SUPERSEDED | | |

| | | | | |
|--|------------|-------------------------|---|-----------------|
| THIS DRAWING IS A CONTROLLED DOCUMENT. | | DWN D.HARDY 07/12/95 | Tyco Electronics Corporation Harrisburg, PA 17105-3608 | |
| DIMENSIONS: mm [INCHES] | | CHK R.STONE 07/13/95 | CABLE CLAMP KIT, STANDARD, UNASSEMBLED, SIZE 17, CPC | |
| TOLERANCES UNLESS OTHERWISE SPECIFIED: | | APVD A.FRANTUM 07/14/95 | NAME | |
| 0 PLC ± - | 1 PLC ± - | PRODUCT SPEC 108-1579 | SIZE | CAGE CODE |
| 2 PLC ± - | 3 PLC ± - | APPLICATION SPEC | A3 | 00779 |
| 4 PLC ± - | ANGLES ± - | WEIGHT - | DRAWING NO | C-213904 |
| MATERIAL 1 | | CUSTOMER DRAWING | | RESTRICTED TO - |
| FINISH - | | SCALE 1:1 | | SHEET 1 OF 1 |
| | | | | REV A1 |