

THIS DRAWING IS UNPUBLISHED. RELEASED FOR PUBLICATION
 © COPYRIGHT BY TYCO ELECTRONICS CORPORATION. ALL RIGHTS RESERVED.

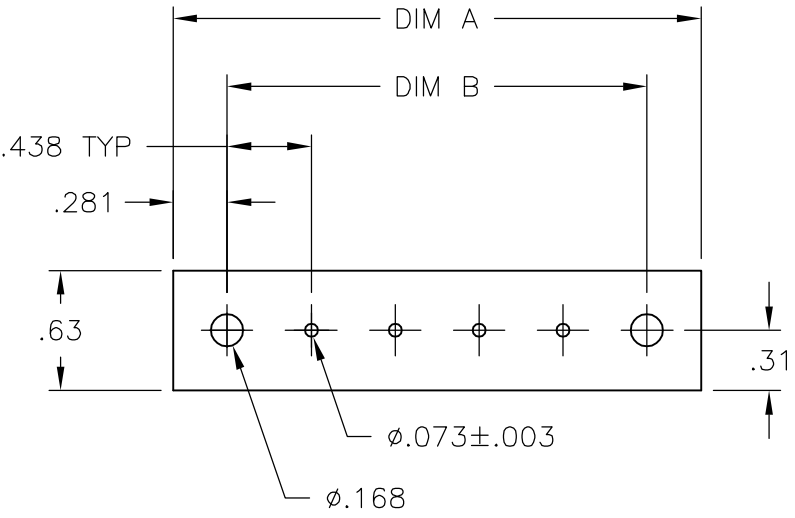
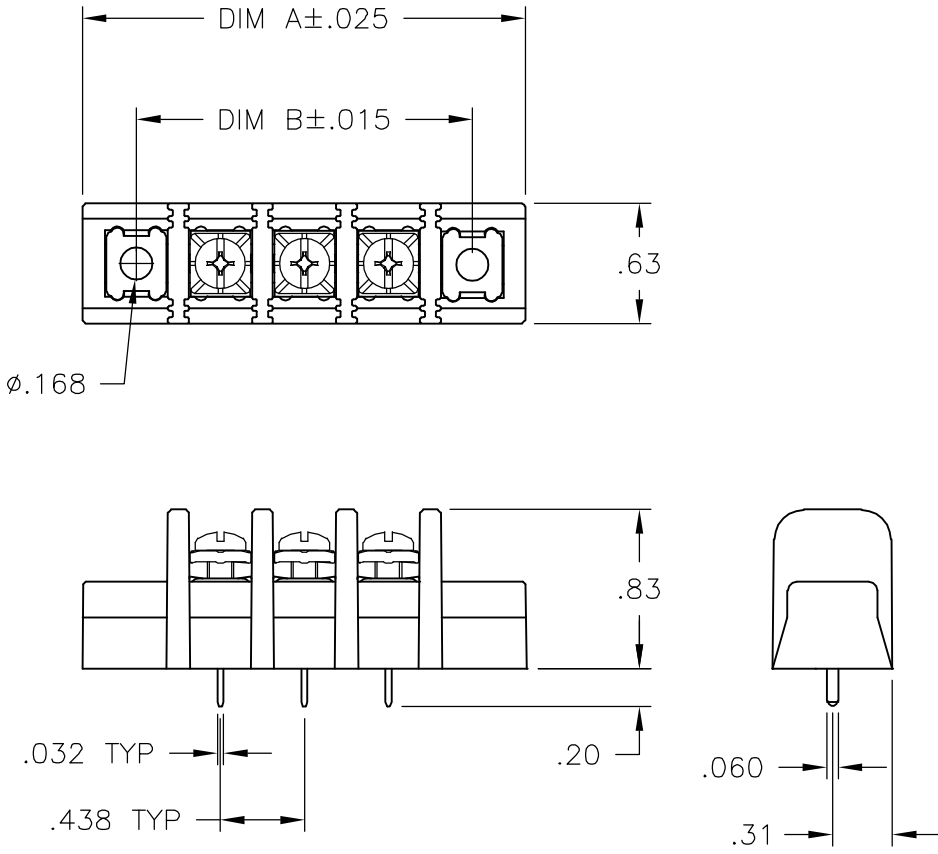
LOC	DIST	REVISIONS					
FT	0	P	LTR	DESCRIPTION	DATE	DWN	APVD
			A	-	11/16/06	SS	SRY

MATERIAL:
 HOUSING: NYLON, UL94V-0, BLACK.
 TERMINALS: BRASS, BRIGHT TIN PLATED.
 SCREWS: 6-32, STEEL, ZINC CHROMATE FINISH.

ELECTRICAL:
 MAXIMUM CURRENT: 20A
 OPERATING VOLTAGE: 600V
 WIRE RANGE: 12-22 AWG

ENVIRONMENT:
 OPERATING TEMP.: -60°C TO 105°C

11.375	11.937	25	SSB7FG250202	2-1546970-5
10.937	11.500	24	SSB7FG240202	2-1546970-4
10.500	11.062	23	SSB7FG230202	2-1546970-3
10.062	10.625	22	SSB7FG220202	2-1546970-2
9.625	10.187	21	SSB7FG210202	2-1546970-1
9.187	9.750	20	SSB7FG200202	2-1546970-0
8.750	9.312	19	SSB7FG190202	1-1546970-9
8.312	8.875	18	SSB7FG180202	1-1546970-8
7.875	8.437	17	SSB7FG170202	1-1546970-7
7.437	8.000	16	SSB7FG160202	1-1546970-6
7.000	7.562	15	SSB7FG150202	9-1437415-1
6.562	7.125	14	SSB7FG140202	1-1546970-4
6.125	6.687	13	SSB7FG130202	1-1546970-3
5.687	6.250	12	SSB7FG120202	1-1546970-2
5.250	5.812	11	SSB7FG110202	1-1546970-1
4.812	5.375	10	SSB7FG100202	1-1546970-0
4.375	4.937	9	SSB7FG090209	8-796602-2
4.375	4.937	9	SSB7FG090202	1546970-9
3.937	4.500	8	SSB7FG080202	1546970-8
3.500	4.062	7	SSB7FG070202	1546970-7
3.062	3.625	6	SSB7FG060202	1546970-6
2.625	3.187	5	SSB7FG050202	8-1437415-8
2.187	2.750	4	SSB7FG040202	1546970-4
1.750	2.312	3	SSB7FG030202	1546970-3
1.312	1.875	2	SSB7FG020202	1546970-2
.875	1.437	1	SSB7FG010202	1546970-1
DIM B	DIM A	NO. OF POS.	CATALOG NUMBER	PART NUMBER



RECOMMENDED PCB LAYOUT

THIS DRAWING IS A CONTROLLED DOCUMENT.		DWN S SCHL GEL 11/16/06	Tyco Electronics Corporation Harrisburg, PA 17105-3608	
DIMENSIONS: INCHES		CHK S YODER 11/16/06		
TOLERANCES UNLESS OTHERWISE SPECIFIED:		APVD S YODER 11/16/06	NAME SSB7FGXX0202	
0 PLC ± -		PRODUCT SPEC -	SIZE CAGE CODE DRAWING NO RESTRICTED TO	
1 PLC ± -		APPLICATION SPEC -	A3 00779 C-8-796602-2	
2 PLC ± .02		WEIGHT -	SCALE NTS	SHEET 1 OF 1
3 PLC ± .010		CUSTOMER DRAWING	REV A	
4 PLC ± -				
ANGLES ± 1°				
FINISH -				