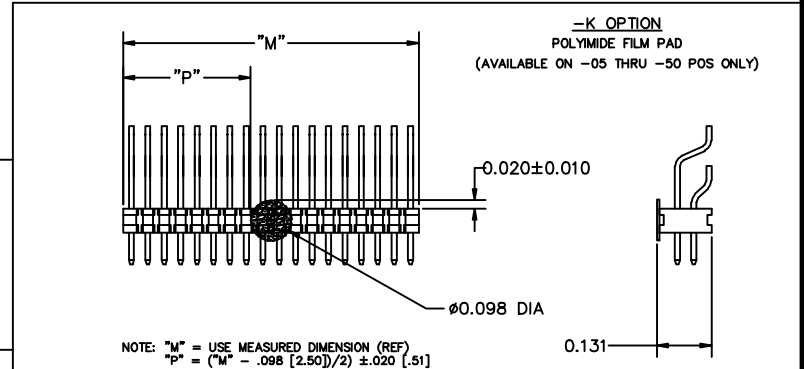
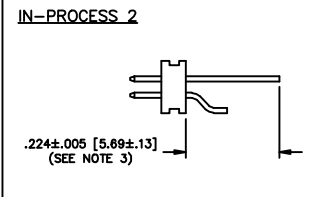
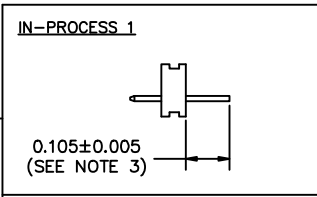
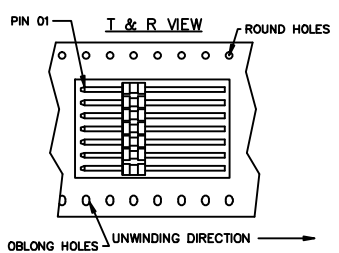
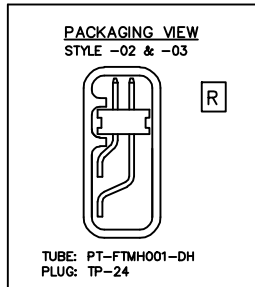
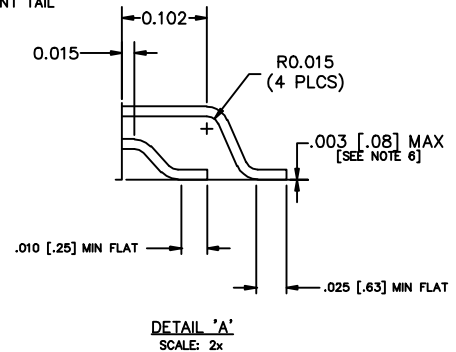
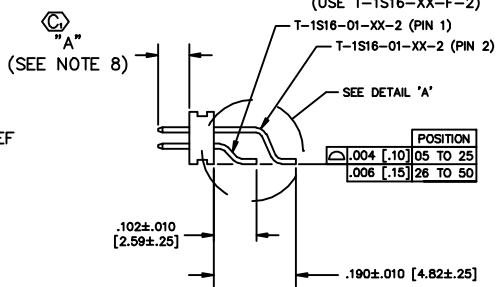
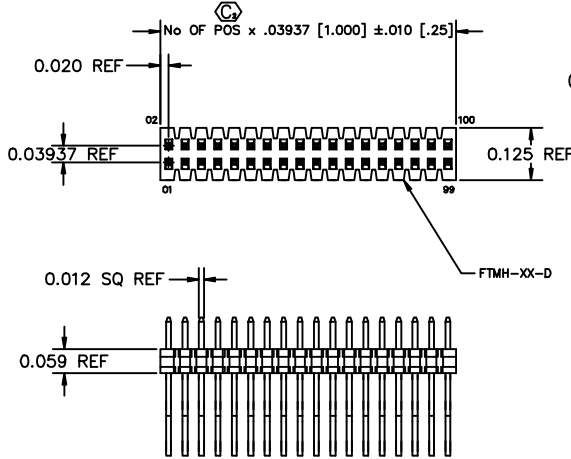


- NOTES:
1. COPLANARITY TO BE WITHIN .004 WHEN AT POSITION 05-25 & BE WITHIN .006 WHEN AT POSITION 26-50.
 2. MINIMUM PUSHOUT FORCE: 1 LB.
 3. SHEAR TAILS TO DIMENSION SHOWN, .003 [.08] MAX BURR.
 4. .015 [.38] MAX CUT FLASH; NO FLASH ALLOWED IN OR AROUND SURFACE MOUNT TAIL AREA.
 5. (C) REPRESENTS A CRITICAL DIMENSION.
 6. PINS 1 AND 2 TO BE FLUSH TO .0030 ABOVE LINE MADE BY THE BODY.
 7. ENDWALL TO BE .008 MIN.
 8. MAX. PIN VARIANCE .005 [.13].

LEAD STYLE	"A"
-02	.075 [.91]
-03	.065 [1.65]

DIMENSIONS ARE IN INCHES		UNLESS OTHERWISE NOTED		TOLERANCES ARE:		TITLE: 1mm x 1mm HORIZONTAL SMT TERMINAL STRIP		DWG NO: FTMH-1XX-XX-XX-DH-X-XX	
ONE PLACE DECIMALS ±.1[2.5]		THREE PLACE DECIMALS ±.005[.13]		ANGLES ± 2°				SHEET 1 OF 1	
TWO PLACE DECIMALS ±.01[.3]		FOUR PLACE DECIMALS ±.0020[.051]							

- FTMH-1XX-XX-XX-DH-X-XX
- No. OF POSITIONS**
 - 05 THRU -50 (PER ROW)
 - LEAD STYLE SPEC**
 - 03: .065 POST (USE T-1S16-01-X-2)
 - 02: .075 POST (USE T-1S16-01-X-2)
 - PLATING SPEC**
 - L: LIGHT SELECTIVE (USE T-1S16-XX-L-2)
 - F: FLASH SELECTIVE (USE T-1S16-XX-F-2)
 - H: HEAVY SELECTIVE (USE T-1S16-XX-H-2)
 - LM: LIGHT SELECTIVE GOLD, MATTE TIN TAIL (USE T-1S16-XX-L-2)
 - FM: FLASH SELECTIVE GOLD, MATTE INT TAIL (USE T-1S16-XX-F-2)
 - ROW SPECIFICATION**
 - DH: DOUBLE HORIZONTAL (USE FTMH-75-D)
 - OPTION 2**
 - TR: TAPE & REEL PACKAGING
 - OPTION 1**
 - K: POLYIMIDE FILM PAD (-05 THRU -50 POSITIONS ONLY)



MATERIAL:
 BODY: ZENITE 6130L
 COLOR: BLACK
 TERMINAL: PHOS BRONZE, 510
 MAX BOW ALLOWED: .002 [.05]
 MAX FLASH ALLOWED: .002 [.05]
 PLOT SCALE: .225/ DIMSCALE .150

samtec
 520 PARK EAST BLVD. NEW ALBANY, INDIANA 47150
 PHONE (812) 944-6733 P.O. BOX 1147
 CODE 55322
 MADE BY: D PURVIS 10/13/98
 FTMH-1XX-XX-XX-DH-X-XX
 SHEET 1 OF 1

PROPRIETARY NOTE
 THIS DOCUMENT CONTAINS INFORMATION CONFIDENTIAL AND PROPRIETARY TO SAMTEC INC. AND SHALL NOT BE REPRODUCED OR TRANSMITTED IN ANY FORM OR BY ANY MEANS, ELECTRONIC OR MECHANICAL, INCLUDING PHOTOCOPYING, RECORDING, OR BY ANY INFORMATION STORAGE AND RETRIEVAL SYSTEM, WITHOUT THE EXPRESS WRITTEN CONSENT OF SAMTEC INC.