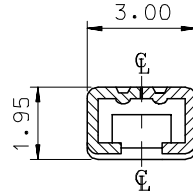
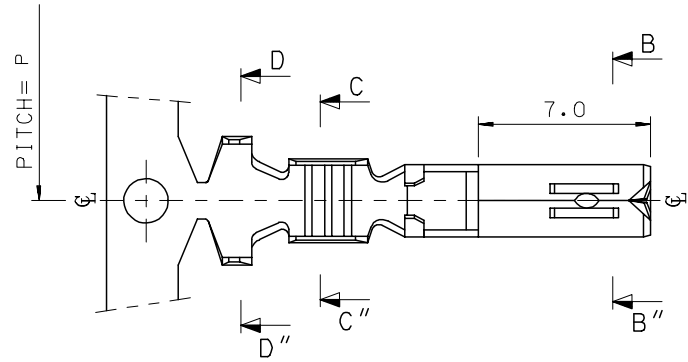


10 9 8 7 6 5 4 3 2 1

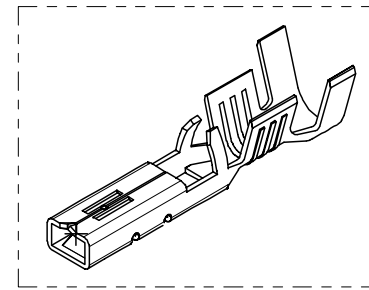
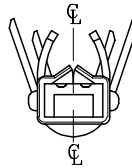
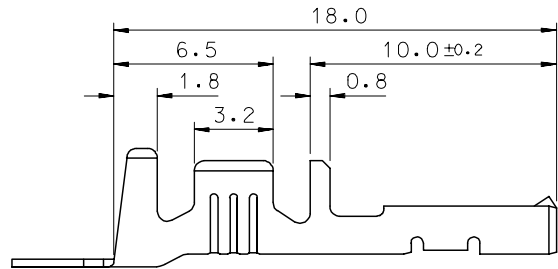
F  
E  
D  
C  
B  
A

F  
E  
D  
C  
B  
A

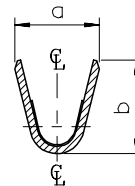
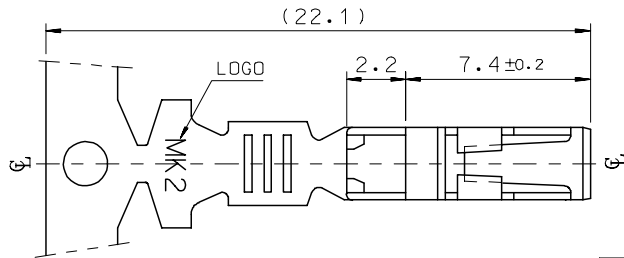


SEC' : B-B''

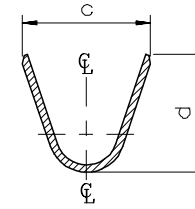
- NOTES
1. MATERIAL : PHOSPHOR BRONZE  
0.3mm THICKNESS
  2. FINISH : PRE-PLATED TIN
  3. RECOMMENDED LENGTH OF WIRE STRIP IS 4.0-4.8mm.



ISOMETRIC VIEW



SEC' : C-C''



SEC' : D-D''

MATERIAL NO	ENG. No.	AWG	a	b	c	d	P
357480210	35748-0210	#18-#14	3.4	3.8	5.2	4.8	12.0
357480110	35748-0110	#22-#20	2.85	2.8	4.2	4.0	10.6
357480410	35748-0410	#24	2.2	1.75	3.85	3.5	10.6

REVISED	DESCRIPTION
EC NO: KOR2008-0087	
DRWN: JHPARK01	2007/11/15
CHKD: W. YANG	2007/11/15
APPR: YUNSIKKIM	2007/11/15

QUALITY SYMBOLS	DESCRIPTION
▽=0	
▽=0	

GENERAL TOLERANCES (UNLESS SPECIFIED)	
mm	INCH
4 PLACES ± ---	± ---
3 PLACES ± ---	± ---
2 PLACES ± 0.3	± ---
1 PLACE ± 0.3	± ---
ANGULAR ± 1 °	
DRAFT WHERE APPLICABLE MUST REMAIN WITHIN DIMENSIONS	

DIMENSION STYLE		SCALE		DESIGN UNITS		THIRD ANGLE PROJECTION	
MM ONLY		1:1		METRIC			
DRAWN BY	DATE	TITLE					
BK. CHOI	1992/11/17	.070 FEMALE TERMINAL (B-TYPE)					
CHECKED BY	DATE						
BK. CHOI	1992/11/17						
APPROVED BY	DATE						
CW. LEE	1992/11/17						
MATERIAL NO.	DOCUMENT NO.					SHEET NO.	
						1 OF 01	

MOLEX INCORPORATED		SD-35748-001	
SEE TABLE		THIS DRAWING CONTAINS INFORMATION THAT IS PROPRIETARY TO MOLEX INCORPORATED AND SHOULD NOT BE USED WITHOUT WRITTEN PERMISSION	

9 8 7 6 5 4 3 2 1