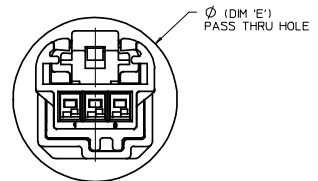
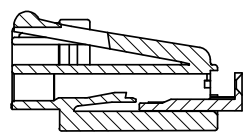
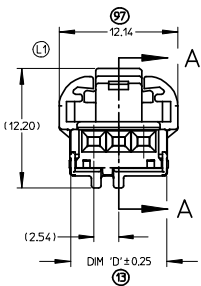
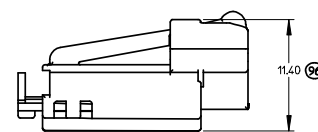


OVERALL MATED LENGTH

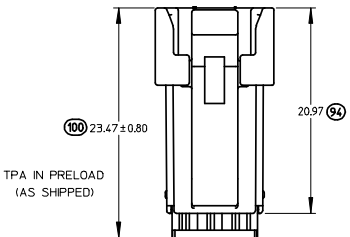


MALE AND FEMALE ASSEMBLY
PASS THRU VIEW
(CAD GENERATED)

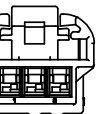


SECTION A-A
SCALE 4:1

MATING SIDE



TPA IN PRELOAD
(AS SHIPPED)



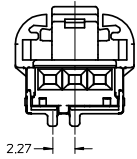
WIRE SIDE

- NOTES:
1. MATERIAL: HOUSING: SPS GLASS FILLED, COLOR SEE CHART.
TPA: PBT
 2. PRODUCT SPECIFICATIONS - IN-LINE MATING INTERFACE: PS-31067-0001.
- DIRECT CONNECT MATING INTERFACE: PS-31100-0001.
 3. PACKAGING SPECIFICATION: DRAWING PK-30907-737.
 4. MATES WITH: SEE SALES DRAWINGS SD-31110-003 (MALE IN-LINE),
SD-31197-003 (RIGHT ANGLE HEADER), SD-31101-114 (VERTICAL
"WINGED" HEADER), AND SD-31206-003 (VERTICAL HEADER).
 5. TERMINAL PLATING: TIN (Sn) OVERALL, BRITE FINISH.
THICKNESS = 15 MICROMETER MINIMUM,
NICKEL (Ni) UNDERPLATE OVERALL.
 6. PACKAGING: PLEASE REFERENCE MOLEX SPECIFICATION PS-34646-001,
AVAILABLE AT WWW.MOLEX.COM. (REFERENCE: TPAs THAT ARE FOUND IN
SEATED (FINAL LOCK) POSITION)
 7. APPLICATION SPECIFICATION: AS-31067-100.

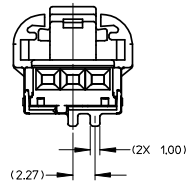
| | | | | | | | | | | | | | | | | |
|--|------------------------------------|--|----------------------|-----------------------------------|----------------------|------------------------|---|---------------------|---|-----------------------|-------------------|-------------|------|---------------------------|------------------------------|---------------------|
| ENTER DESCRIPTION IEC NO: UAU2008-0767 DRAWN: MACHUGA 2008/07/08 CHECKED: CHYKOBLOCK 2008/07/09 APPR: SMARCEAU 2008/07/09 | QUALITY SYMBOLS =0 =0 | GENERAL TOLERANCES (UNLESS SPECIFIED) | | DIMENSION STYLE MM ONLY | SCALE 1:1 | DESIGN UNITS METRIC | THIRD ANGLE PROJECTION | | | | | | | | | |
| | | 4 PLACES ± --- ± --- | 3 PLACES ± --- ± --- | 2 PLACES ± 0.13 ± --- | 1 PLACE ± 0.25 ± --- | ANGLAR ± 1/2° | DRAFT WHERE APPLICABLE MUST REMAIN WITHIN DIMENSIONS | DRAWN BY BDLCK01 | DATE 6/22/2007 | CHECKED BY CDILLON | DATE 6/22/2007 | APPROVED BY | DATE | MATERIAL NO. SEE CHART | DOCUMENT NO. SD-31109-003 | SHEET NO. 1 OF 4 |
| | | MOLEX INCORPORATED | | | | | | | TITLE FEMALE ASSEMBLY CHARTED SALES DRAWING | | | | | | | |
| | | THIS DRAWING CONTAINS INFORMATION THAT IS PROPRIETARY TO MOLEX INCORPORATED AND SHOULD NOT BE USED WITHOUT WRITTEN PERMISSION | | | | | | | | | | | | | | |

FEMALE VIEWED FROM MATING SIDE

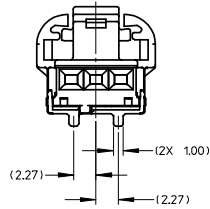
3 WAY POLARIZATION 'A'



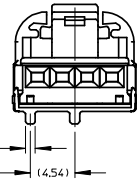
3 WAY POLARIZATION 'B'



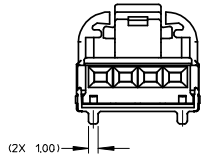
3 WAY POLARIZATION 'C'



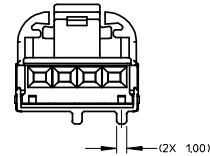
4 WAY POLARIZATION 'A'



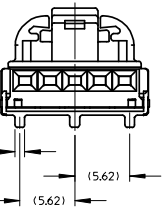
4 WAY POLARIZATION 'B'



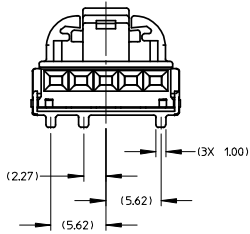
4 WAY POLARIZATION 'C'



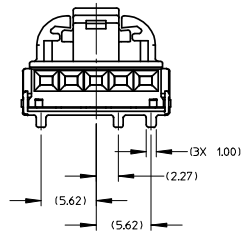
5 WAY POLARIZATION 'A'



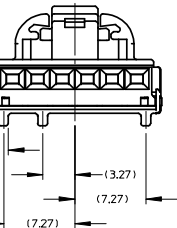
5 WAY POLARIZATION 'B'



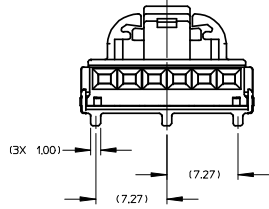
5 WAY POLARIZATION 'C'



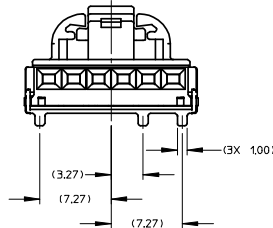
6 WAY POLARIZATION 'A'



6 WAY POLARIZATION 'B'



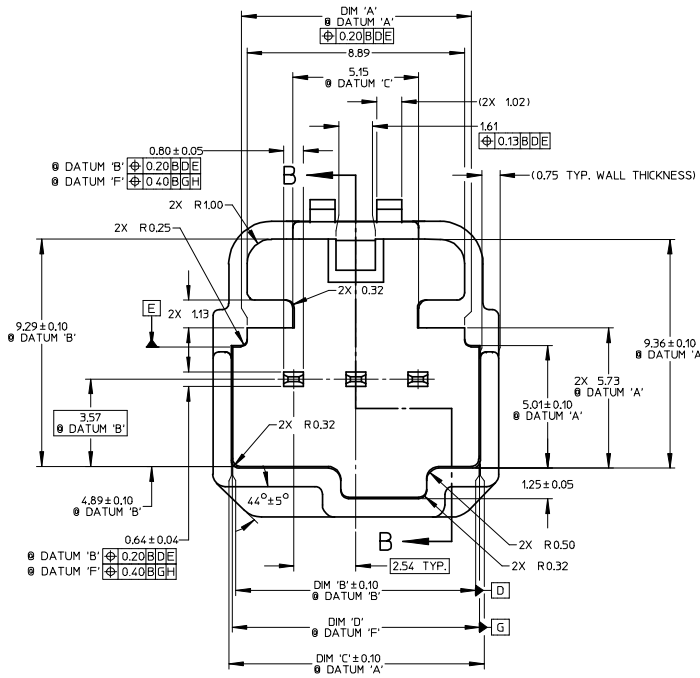
6 WAY POLARIZATION 'C'



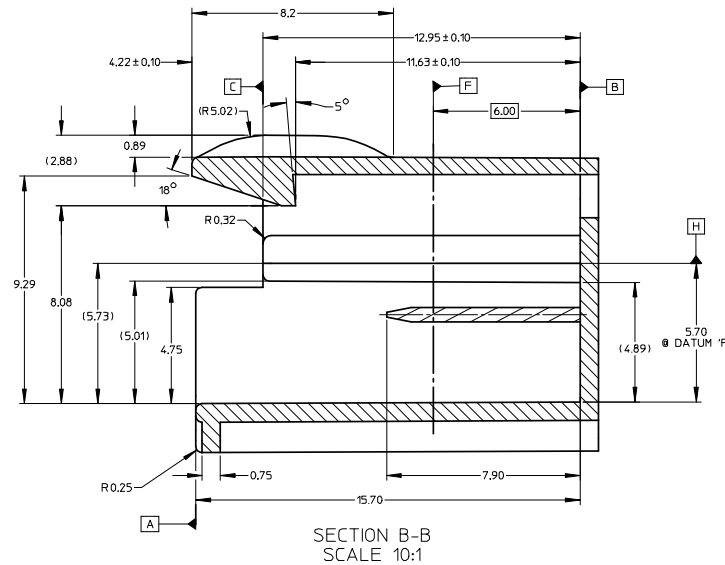
| BILL OF MATERIALS | | | | | | MATING ASSEMBLIES PART NUMBERS | | | | | |
|----------------------|--|-------------|----------------|-----------------|---------|--------------------------------|------------------------------------|-----------------------------------|----------------------------------|-------------------------------|----------------------------------|
| ASSEMBLY PART NUMBER | DESCRIPTION | PART NUMBER | DESCRIPTION | COLOR | DIM 'D' | DIM 'E' | INLINE MALE ASSEMBLY W/O XMAS SLOT | INLINE MALE ASSEMBLY W/ XMAS SLOT | RIGHT ANGLE MALE HEADER ASSEMBLY | VERTICAL MALE HEADER ASSEMBLY | VERTICAL MALE WINGED HEADER ASSY |
| 31067-1010 | 3 WAY FEMALE ASSEMBLY POLARIZATION 'A' | 31111-0030 | FEMALE HOUSING | BLACK | 9.80 | 16.76 | 31067-1040 | 31067-1070 | 31100-0030 NOT TOOLED | 31101-0030 NOT TOOLED | TBD |
| | | 31113-0030 | TPA | NATURAL (WHITE) | | | | | | | |
| 31067-1011 | 3 WAY FEMALE ASSEMBLY POLARIZATION 'B' | 31111-0031 | FEMALE HOUSING | GRAY | 9.80 | 16.76 | 31067-1041 | 31067-1071 | 31100-0031 NOT TOOLED | 31101-0031 NOT TOOLED | TBD |
| | | 31113-0030 | TPA | NATURAL (WHITE) | | | | | | | |
| 31067-1012 | 3 WAY FEMALE ASSEMBLY POLARIZATION 'C' | 31111-0032 | FEMALE HOUSING | BROWN | 9.80 | 16.76 | 31067-1042 | 31067-1072 | 31100-0032 NOT TOOLED | 31101-0032 NOT TOOLED | TBD |
| | | 31113-0030 | TPA | NATURAL (WHITE) | | | | | | | |
| 31068-1010 | 4 WAY FEMALE ASSEMBLY POLARIZATION 'A' | 31157-0040 | FEMALE HOUSING | BLACK | 12.34 | 18.25 | 31068-1040 | 31068-1070 | 31100-0040 | 31101-0040 | 31101-1140 |
| | | 31158-0040 | TPA | NATURAL (WHITE) | | | | | | | |
| 31068-1011 | 4 WAY FEMALE ASSEMBLY POLARIZATION 'B' | 31157-0041 | FEMALE HOUSING | GRAY | 12.34 | 18.25 | 31068-1041 | 31068-1071 | 31100-0041 | 31101-0041 | 31101-1240 |
| | | 31158-0040 | TPA | NATURAL (WHITE) | | | | | | | |
| 31068-1012 | 4 WAY FEMALE ASSEMBLY POLARIZATION 'C' | 31157-0042 | FEMALE HOUSING | BROWN | 12.34 | 18.25 | 31068-1042 | 31068-1072 | 31100-0042 | 31101-0042 | 31101-1340 |
| | | 31158-0040 | TPA | NATURAL (WHITE) | | | | | | | |
| 31072-1010 | 5 WAY FEMALE ASSEMBLY POLARIZATION 'A' | 31160-0050 | FEMALE HOUSING | BLACK | 14.88 | 20.25 | 31072-1040 | 31072-1070 | 31100-0050 NOT TOOLED | 31101-0050 NOT TOOLED | TBD |
| | | 31161-0050 | TPA | NATURAL (WHITE) | | | | | | | |
| 31072-1011 | 5 WAY FEMALE ASSEMBLY POLARIZATION 'B' | 31160-0051 | FEMALE HOUSING | GRAY | 14.88 | 20.25 | 31072-1041 | 31072-1071 | 31100-0051 NOT TOOLED | 31101-0051 NOT TOOLED | TBD |
| | | 31161-0050 | TPA | NATURAL (WHITE) | | | | | | | |
| 31072-1012 | 5 WAY FEMALE ASSEMBLY POLARIZATION 'C' | 31160-0052 | FEMALE HOUSING | BROWN | 14.88 | 20.25 | 31072-1042 | 31072-1072 | 31100-0052 NOT TOOLED | 31101-0052 NOT TOOLED | TBD |
| | | 31161-0050 | TPA | NATURAL (WHITE) | | | | | | | |
| 31073-1010 | 6 WAY FEMALE ASSEMBLY POLARIZATION 'A' | 31163-0060 | FEMALE HOUSING | BLACK | 17.42 | 22.75 | 31073-1040 | 31073-1070 | 31100-0060 NOT TOOLED | 31101-0060 NOT TOOLED | TBD |
| | | 31164-0060 | TPA | NATURAL (WHITE) | | | | | | | |
| 31073-1011 | 6 WAY FEMALE ASSEMBLY POLARIZATION 'B' | 31163-0061 | FEMALE HOUSING | GRAY | 17.42 | 22.75 | 31073-1041 | 31073-1071 | 31100-0061 NOT TOOLED | 31101-0061 NOT TOOLED | TBD |
| | | 31164-0060 | TPA | NATURAL (WHITE) | | | | | | | |
| 31073-1012 | 6 WAY FEMALE ASSEMBLY POLARIZATION 'C' | 31163-0062 | FEMALE HOUSING | BROWN | 17.42 | 22.75 | 31073-1042 | 31073-1072 | 31100-0062 NOT TOOLED | 31101-0062 NOT TOOLED | TBD |
| | | 31164-0060 | TPA | NATURAL (WHITE) | | | | | | | |

| | | | | | | | | |
|---|--------------------------------------|---|----------------------------------|-----------------------------------|-------------------|-------------------------------------|---|---------------------|
| ENTER DESCRIPTION IEC NO. UAU2008-0767 DRAWN/TMACHUGA 2008/07/08 CHYK/BDLCK 2008/07/09 APPR./SMARCEAU 2008/07/09 | QUALITY SYMBOLS ▽=0 ▽=0 | GENERAL TOLERANCES (UNLESS SPECIFIED) | | DIMENSION STYLE MM ONLY | SCALE 1:1 | DESIGN UNITS METRIC | THIRD ANGLE PROJECTION | |
| | | 4 PLACES ±.05 INCH 3 PLACES ±.05 METRIC 2 PLACES ±0.13 INCH 1 PLACE ±0.25 METRIC | MATERIAL NO. SEE CHART | | DATE 6/22/2007 | | TITLE FEMALE ASSEMBLY CHARTED SALES DRAWING | |
| | | DRAFT WHERE APPLICABLE MUST REMAIN WITHIN DIMENSIONS | | APPROVED BY DATE | | DOCUMENT NO. SD-31109-003 | | SHEET NO. 2 OF 4 |
| | | THIS DRAWING CONTAINS INFORMATION THAT IS PROPRIETARY TO MOLEX INCORPORATED AND SHOULD NOT BE USED WITHOUT WRITTEN PERMISSION | | | | | | |

REFERENCE ONLY

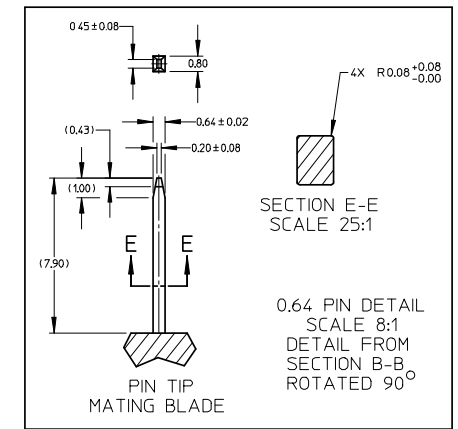


MATING INTERFACE DETAIL
SCALE 10:1
RECOMMENDED MATING MATERIAL: SPS, 30% GLASS FILLED.



SECTION B-B
SCALE 10:1

RECOMMENDED DIRECT CONNECT INFO
FOR MATING FEMALE PARTS ONLY



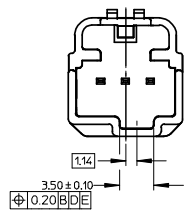
DIMENSIONS FOR DIRECT CONNECT

| CIRCUIT SIZE | DIM 'A' | DIM 'B' | DIM 'C' | DIM 'D' |
|--------------|---------|---------|---------|---------|
| 3 | 8.89 | 10.05 | 10.19 | 10.11 |
| 4 | 11.20 | 12.59 | 12.73 | 12.65 |
| 5 | 13.74 | 15.13 | 15.27 | 15.19 |
| 6 | 16.28 | 17.67 | 17.81 | 17.73 |

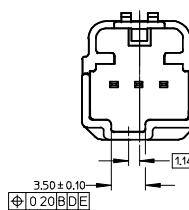
| | | | | | | | |
|--|--|---|---|--------------------------------------|-------------------------------|---|--------------------|
| ENTER DESCRIPTION IEC NO. UAU2008-0767 DRAWN BY: MACHUGA 2008/07/08 CHECKED BY: CHYKBOJICK 2008/07/09 APPR: SHARCEAU 2008/07/09 REV DESCRIPTION | QUALITY SYMBOLS =0 =0 | GENERAL TOLERANCES (UNLESS SPECIFIED) mm INCH 4 PLACES \pm --- \pm --- 3 PLACES \pm --- \pm --- 2 PLACES \pm 0.13 \pm --- 1 PLACE \pm 0.25 \pm --- ANGULAR \pm 1/2° | DIMENSION STYLE MM ONLY | SCALE 1:1 | DESIGN UNITS METRIC | THIRD ANGLE PROJECTION | |
| | DRAFT WHERE APPLICABLE MUST REMAIN WITHIN DIMENSIONS | MATERIAL NO. SEE CHART | DRAWN BY DATE BDICK01' 6/22/2007 | CHECKED BY DATE CDILLON 6/22/2007 | APPROVED BY DATE | TITLE FEMALE ASSEMBLY CHARTED SALES DRAWING | MOLEX INCORPORATED |
| | DOCUMENT NO. SD-31109-003 | SHEET NO. 3 OF 4 | THIS DRAWING CONTAINS INFORMATION THAT IS PROPRIETARY TO MOLEX INCORPORATED AND SHOULD NOT BE USED WITHOUT WRITTEN PERMISSION | | | | |
| | | | | | | | |

REFERENCE ONLY

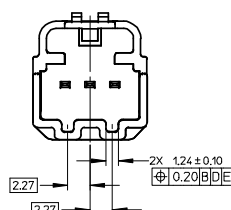
3 WAY POLARIZATION "A"



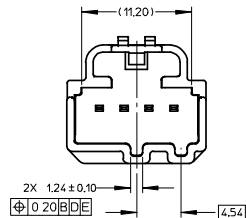
3 WAY POLARIZATION "B"



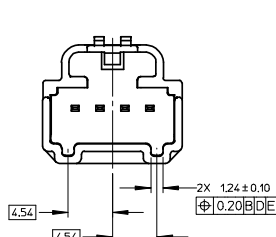
3 WAY POLARIZATION "C"



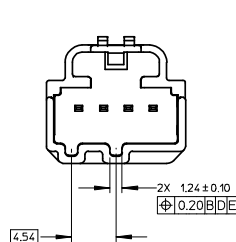
4 WAY POLARIZATION "A"



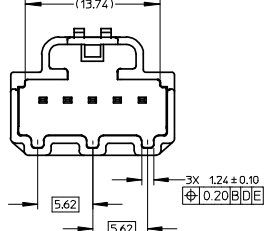
4 WAY POLARIZATION "B"



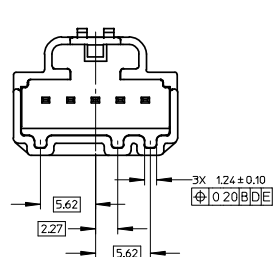
4 WAY POLARIZATION "C"



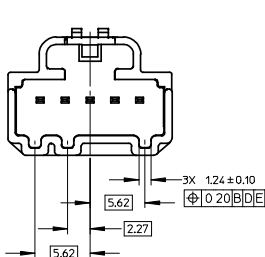
5 WAY POLARIZATION "A"



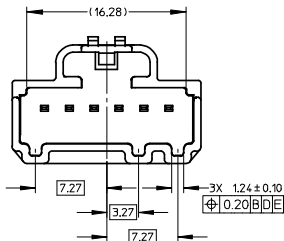
5 WAY POLARIZATION "B"



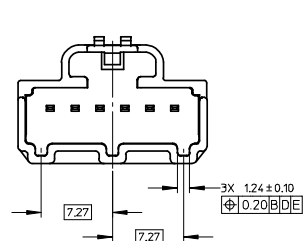
5 WAY POLARIZATION "C"



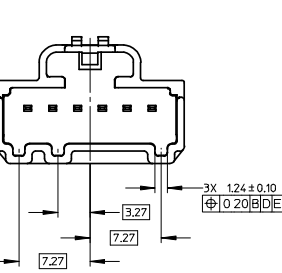
6 WAY POLARIZATION "A"



6 WAY POLARIZATION "B"



6 WAY POLARIZATION "C"



| | | | | | | | | | | | | |
|---|---|--|---|--|---|--|----------------------|--|--|--|---|--|
| ENTER DESCRIPTION IEC NO: UAU2008-0767 DRAWN: MACHIGA 2008/07/08 CHKD: BDI CK 2008/07/09 APPR: SMARCEAU 2008/07/09 REV: DESCRIPTION | QUALITY SYMBOLS ▽=0 ▽=0 | | GENERAL TOLERANCES (UNLESS SPECIFIED) mm INCH | | DIMENSION STYLE MM ONLY | | SCALE 4:1 | | DESIGN UNITS METRIC | | THIRD ANGLE PROJECTION | |
| | 4 PLACES ± --- ± --- | | 3 PLACES ± --- ± --- | | 2 PLACES ± 0.13 ± --- | | 1 PLACE ± 0.25 ± --- | | DRAWN BY BDI CK01' DATE 6/22/2007 CHECKED BY CDILLON DATE 6/22/2007 APPROVED BY DATE | | TITLE FEMALE ASSEMBLY CHARTED SALES DRAWING | |
| | ANGULAR ± 1/2° | | DRAFT WHERE APPLICABLE MUST REMAIN WITHIN DIMENSIONS | | MATERIAL NO. SEE CHART DOCUMENT NO. SD-31109-003 | | MOLEX INCORPORATED | | SHEET NO. 4 OF 4 | | | |
| | THIS DRAWING CONTAINS INFORMATION THAT IS PROPRIETARY TO MOLEX INCORPORATED AND SHOULD NOT BE USED WITHOUT WRITTEN PERMISSION | | | | | | | | | | | |