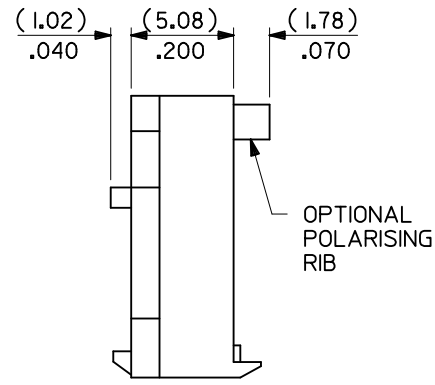
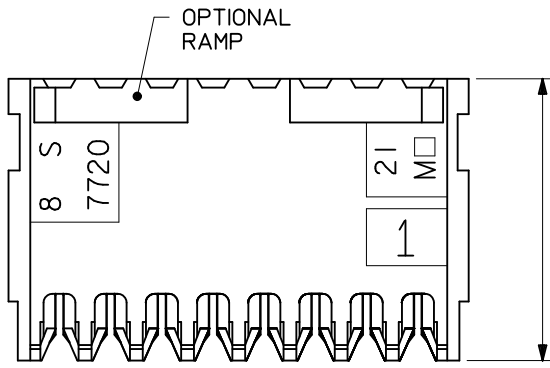


10 9 8 7 6 5 4 3 2 1

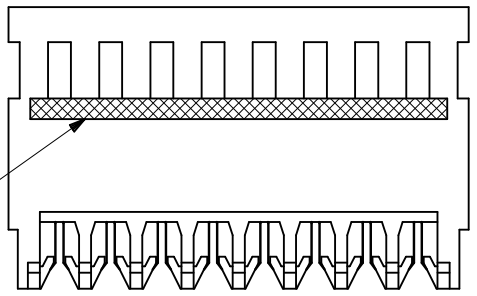
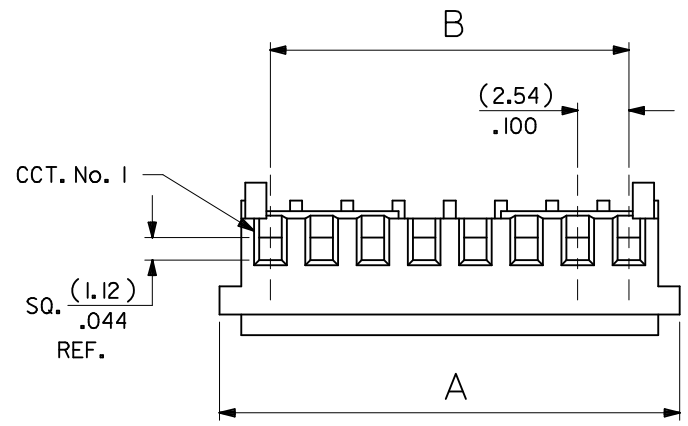


NO OF CCTS	DIM. A	DIM. B
2	(7.59) / .299	(2.54) / .100
3	(10.13) / .399	(5.08) / .200
4	(12.67) / .499	(7.62) / .300
5	(15.21) / .599	(10.16) / .400
6	(17.75) / .699	(12.70) / .500
7	(20.29) / .799	(15.24) / .600
8	(22.83) / .899	(17.78) / .700
9	(25.37) / .999	(20.32) / .800
10	(27.91) / 1.099	(22.86) / .900
11	(30.45) / 1.199	(25.40) / 1.000
12	(32.99) / 1.299	(27.94) / 1.100
13	(35.53) / 1.399	(30.48) / 1.200
14	(38.07) / 1.499	(33.02) / 1.300
15	(40.61) / 1.599	(35.56) / 1.400
16	(43.15) / 1.699	(38.10) / 1.500
17	(45.69) / 1.799	(40.64) / 1.600
18	(48.23) / 1.899	(43.18) / 1.700
19	(50.77) / 1.999	(45.72) / 1.800
20	(53.31) / 2.099	(48.26) / 1.900
21	(55.85) / 2.199	(50.80) / 2.000
22	(58.39) / 2.299	(53.34) / 2.100
23	(60.93) / 2.399	(55.88) / 2.200
24	(63.47) / 2.499	(58.42) / 2.300
25	(66.01) / 2.599	(60.96) / 2.400
26	(68.55) / 2.699	(63.50) / 2.500
27	(71.09) / 2.799	(66.04) / 2.600
28	(73.63) / 2.899	(68.58) / 2.700

BASE No. A-7720S * N * *
 VOID LOC' n.
 TERMINAL DESIGNATION
 No. OF CCTS.
HOUSING CONFIGURATION

- WITHOUT BACKWALL** (FEED-THRU HOUSING)
 { A. HSG, NO RAMP, NO POL. RIBS
 B. WITH RAMP
 C. WITH RAMP AND POL. RIB
- WITH BACKWALL** (FEED-TO HOUSING)
 { D. HSG, NO RAMP, NO POL. RIB
 E. WITH RAMP
 F. WITH RAMP AND POL. RIB

- NOTES:
 1. MATERIAL: HOUSING: NYLON 6/6, UL94V-2, COLOR: NATURAL, TERMINALS: PHOS. BRONZE
 2. FINISH: SEE CHARTS
 3. PRODUCT SPECIFICATION: PS-99020-0088
 4. PACKAGING: PER PK-7720-100
 5. VOIDS ARE AVAILABLE WITH PIN WINDOWS MOLDED CLOSED.
 6. ALL TERMINALS HAVE CAT-EARS CONFIGURATION EXCEPT WHEN GOLD PLATED.
 7. THIS ASSEMBLY IS FOR USE WITH (0.64)/.025 SQ. OR ROUND PINS, INSERTION DEPTH (6.10-7.87)/.240-.310
 8. THIS ASSEMBLY WILL ACCOMMODATE (1.42)/.056 MAX INSULATION DIA.
 9. COLOR STRIPE ON FULL LENGTH OF RIB DENOTES WIRE GAUGE (SEE CHART)



TERMINAL DESIGNATION	COLOR STRIPE	FOR USE WITH WIRE SIZES:
H	GREEN	24 AWG SOLID, STRANDED TINNED, AND STRANDED TOPCOAT 26 AWG STRANDED TOPCOAT
J	BROWN	26 AWG SOLID AND STRANDED TINNED, 28 AWG SOLID, STRANDED TINNED, AND STRANDED TOPCOAT

CHANGE TERMINAL EC NO: UCP/2010-3202 DRWN:WK/PPER 2010/08/19 CHKD:JBELL 2010/09/28 APPR:FSM/TH 2010/09/28	QUALITY SYMBOLS ▽=0 ◻=0
W	REV

GENERAL TOLERANCES (UNLESS SPECIFIED)	DIMENSION STYLE MM/IN
4 PLACES ± --- ± ---	DRAWN BY GCH DATE 23/12/86
3 PLACES ± --- ± .005	CHECKED BY DATE
2 PLACES ± 0.13 ± .010	D. MORIARTY DATE 23/12/86
1 PLACE ± 0.25 ± ---	APPROVED BY DATE
ANGULAR ± 2 °	J. DENNEHY DATE 23/12/86
DRAFT WHERE APPLICABLE MUST REMAIN WITHIN DIMENSIONS	MATERIAL NO.

SCALE ---	DESIGN UNITS METRIC	THIRD ANGLE PROJECTION
TITLE KK (2.54)/.100 INSULATION DISPLACEMENT CONNECTOR ASSEMBLY		
MOLEX INCORPORATED		
DOCUMENT NO. SDA-7720S-*N*	SHEET NO. 1 OF 3	
THIS DRAWING CONTAINS INFORMATION THAT IS PROPRIETARY TO MOLEX INCORPORATED AND SHOULD NOT BE USED WITHOUT WRITTEN PERMISSION		

9 8 7 6 5 4 3 2 1

