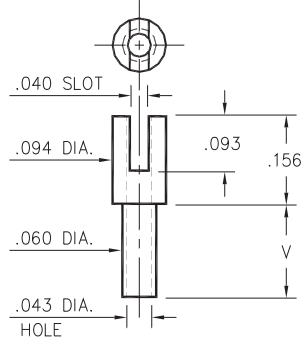
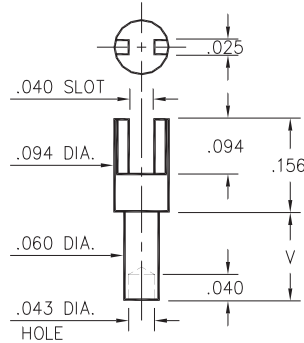


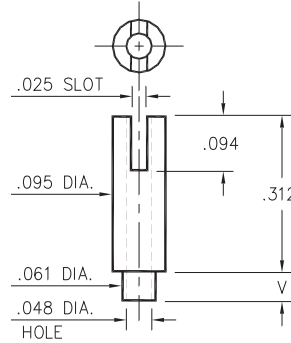
2303/2323/2322



2303-X-01-XX-00-00-07-0
Swage mount in .064 hole



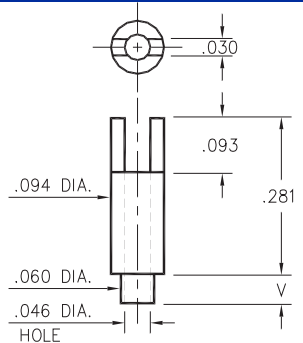
2323-X-01-XX-00-00-07-0
Swage mount in .064 hole



2322-X-01-XX-00-00-07-0
Swage mount in .064 hole

- X -	Board Thickness	Length V
1	.031	.053
2	.062	.084
3	.094	.115
4	.125	.147

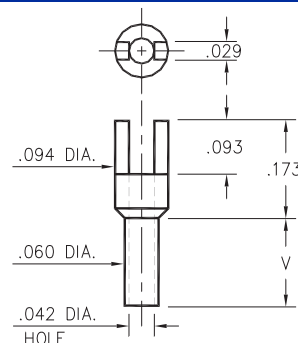
2320



2320-X-01-XX-00-00-07-0
Swage mount in .064 hole

- X -	Board Thickness	Length V
1	.031	.053
2	.062	.084
3	.094	.115

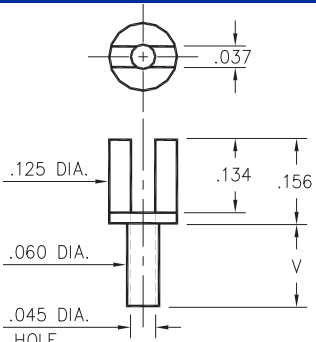
2328



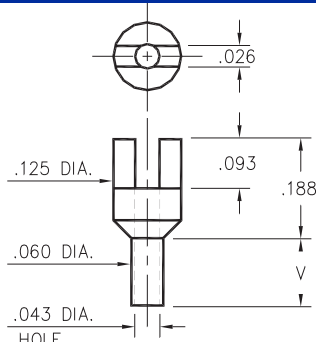
2328-X-01-XX-00-00-07-0
Swage mount in .064 hole

- X -	Board Thickness	Length V
1	.031	.062
2	.062	.094
3	.094	.125
4	.125	.156

2520/2517



2520-X-01-XX-00-00-07-0
Swage mount in .064 hole



2517-X-01-XX-00-00-07-0
Swage mount in .064 hole

- X -	Board Thickness	Length V
1	.031	.062
2	.062	.094
3	.094	.125
4	.125	.156

SPECIFICATIONS

PIN MATERIAL:
Brass Alloy 360, 1/2 Hard
Swage pins are annealed

DIMENSION IN INCHES
TOLERANCES ON:
LENGTHS: ±.005
DIAMETERS: ±.002
ANGLES: ± 2°

ORDER CODE: XXXX - X - 01 - XX - 00 - 00 - 07 - 0

BASIC PART #

SPECIFY PIN FINISH:

- 01 200µ" TIN/LEAD OVER NICKEL
- ◇ 80 200µ" TIN OVER NICKEL (RoHS)
- ◇ 44 300µ" SILVER OVER COPPER (RoHS)
- ◇ 50 300µ" ELECTRO-SOLDER (RoHS) (60/40 SnPb)

