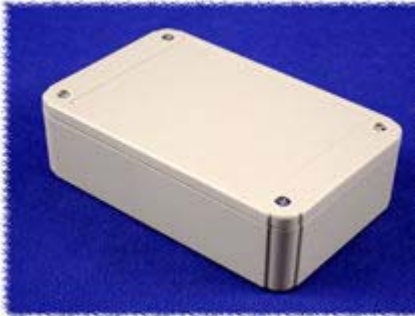




RITEC - Project ABS Plastic Enclosures (RL Series) - Shallow Lid

[Home](#)
[Products](#)
[Distributors](#)
[Technical](#)
[Contact Us](#)
[Other Options](#)

Path: [Home](#) > [Enclosure Index](#) > **RITEC** - Project Enclosures



click to enlarge

(Assembled View)



click to enlarge

(Open View)



click to enlarge

**(Assembled View)
Flanged Lid**

Key Features:

- Designed to house P.C. boards - for hand-held use or wall mount.
- Molded in light grey - general purpose ABS plastic with a light texture.
- Two part construction. Both halves include smooth recessed area for membrane, label or silkscreen (see chart below for recess size).
- P.C. board standoffs are molded into both halves of the enclosure - (see [photo tables](#) for details).
- Designed to meet IP54.
- All sizes also available in a flanged lid version.
- Includes four - M3 assembly screws.

Part Number	Part Number (With Flanged Lid)	Units	Length	Width	Enclosure Depth (With Lid)	Lid Recess Size	Bottom Recess Size	P.C.B. Mounting Dimensions	Wall Mount Dimensions (Flanged Lid)
RL6105	RL6105-F	Inches	3.15	2.36	1.18	2.13 x 2.05	2.13 x 2.05	2.52 x 1.18	3.62
		mm	80	60	30	54 x 52	54 x 52	64 x 30	92
RL6115	RL6115-F	Inches	3.15	2.36	1.57	2.13 x 2.05	2.13 x 2.05	2.52 x 1.18	3.62
		mm	80	60	40	54 x 52	54 x 52	64 x 30	92
RL6215	RL6215-F	Inches	4.92	3.15	1.38	3.78 x 2.76	3.78 x 2.76	4.21 x 1.57	5.39
		mm	125	80	35	96 x 70	96 x 70	107 x 40	137
RL6225	RL6225-F	Inches	4.92	3.15	1.97	3.78 x 2.76	3.78 x 2.76	4.21 x 1.57	5.39
		mm	125	80	50	96 x 70	96 x 70	107 x 40	137
RL6335	RL6335-F	Inches	4.92	3.94	2.36	3.78 x 3.46	3.78 x 3.46	4.17 x 2.56	5.39
		mm	125	100	60	96 x 88	96 x 88	106 x 65	137
RL6365	RL6365-F	Inches	4.92	3.94	3.54	3.78 x 3.46	3.78 x 3.46	4.17 x 2.56	5.39
		mm	125	100	90	96 x 88	96 x 88	106 x 65	137
RL6435	RL6435-F	Inches	5.91	3.94	2.36	4.72 x 3.54	4.72 x 3.54	5.20 x 2.36	6.38

		mm	150	100	60	120 x 90	120 x 90	132 x 60	162
RL6465	RL6465-F	Inches	5.91	3.94	3.54	4.72 x 3.54	4.72 x 3.54	5.20 x 2.36	6.38
		mm	150	100	90	120 x 90	120 x 90	132 x 60	162
RL6555	RL6555-F	Inches	6.89	4.92	2.76	5.59 x 4.53	5.59 x 4.53	6.06 x 2.76	7.36
		mm	175	125	70	142 x 115	140 x 112	154 x 70	187
RL6585	RL6585-F	Inches	6.89	4.92	3.94	5.59 x 4.53	5.59 x 4.41	6.06 x 2.76	7.36
		mm	175	125	100	142 x 115	140 x 112	154 x 70	187
RL6655	RL6655-F	Inches	7.87	5.91	2.76	6.50 x 5.31	6.50 x 5.31	7.01 x 3.94	6.50
		mm	200	150	70	165 x 135	165 x 135	178 x 100	216
RL6685	RL6685-F	Inches	7.87	5.91	3.94	6.50 x 5.31	6.50 x 5.31	7.01 x 3.94	6.50
		mm	200	150	100	165 x 135	165 x 135	178 x 100	216

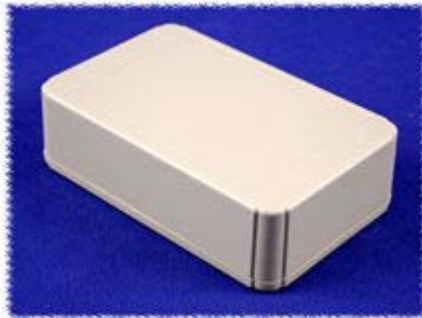


Link here to [photo tables](#) of each part number.



(click to enlarge)

**Assembled View
(Top)**



(click to enlarge)

**Assembled View
(Bottom)**



(click to enlarge)

Open View

Exactly what you are looking for???

Link to our stocking distributors - most have "on-line" pricing, stock check and ordering!!!

[Our Distributors](#)

[Order from your favorite distributor](#)

[Home](#) | [Products](#) | [Distributors](#) | [Technical](#) | [Contact Us](#) | [Other Options](#)

Copyright; © 2007 Hammond Mfg Co Inc

URL: <http://www.hammondmfg.com>