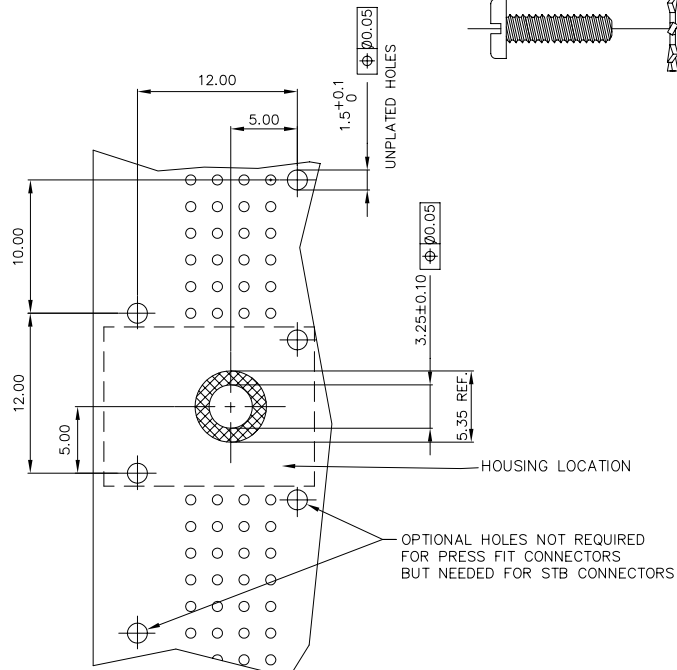
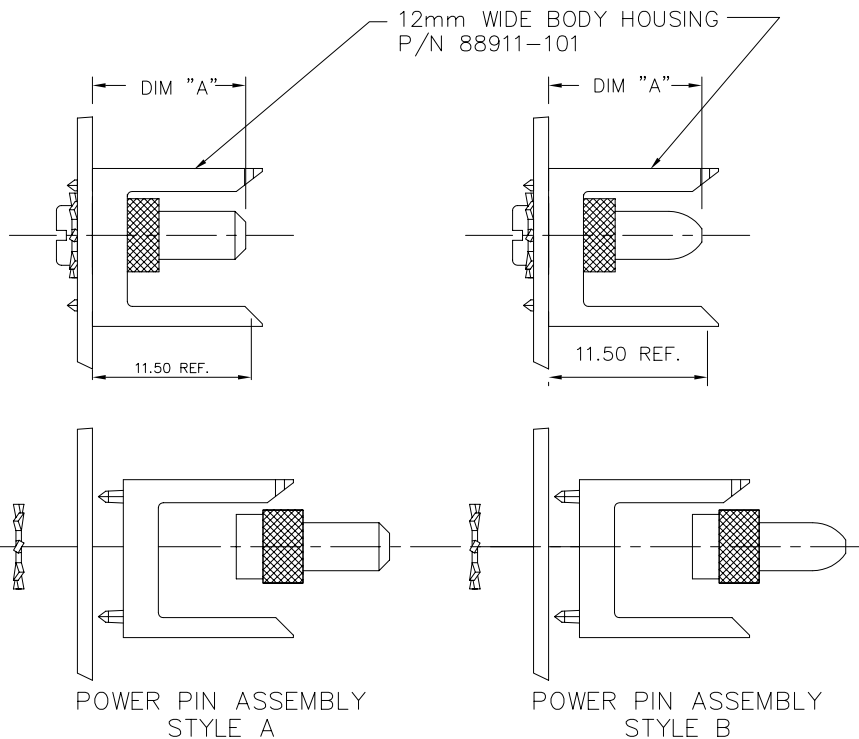


PRODUCT NUMBER
SEE TABLE--SHEET 2

-0YY	COMES WITH A BRASS SLOTTED PAN HEAD SCREW W/NICKEL PLATING	NOTE 4
-1YY	COMES WITH A STAINLESS STEEL COMBO PAN HEAD SCREW	NOTE 2



RECOMMENDED HOLE PATTERN
COMPONENT SIDE

mat'l. code		surface ISO 1302 ✓		tolerance ISO 406 ISO 1101		projection mm		product family METRAL ACC.	
ltr	ecn	no	dr	date		tolerances unless otherwise specified		title	
J	v94312	MDF	11/04/99	angles	linear	xx ±.01/.3	POWER PIN ASSEMBLY		
K	v94406	HTB	12/01/99	σ±2'	xxxx ±.005/.13	12 mm		dwg no	
L	v00746	LSS	3/06/00	xxxx ±.0020/.050		scale 1:1		sheet 1 of 2	
M	v01293	JWS	6/01/00	dr	STU STONER	12/12/91	size		
N	v12634	EPK	11/09/01	enr	R. DOUTRICH	12/12/91	A3		
P	M05-0202	MHT	9/23/05	chr	STU STONER	12/12/91	91570		
R	M06-0286	MNR	7/27/06	appd	STU STONER	12/12/91	type Product Customer Drawing		
sheet	revisor	R	R						
index	sheet	1	2						



Copyright FCI

PRODUCT NUMBER	DIM "A"±0.10	SCREW LENGTH	PIN TIP	NOTES	LEAD FREE OPTION
91570-X01	11.50	7.92	STYLE A		NOTE 5
91570-X02	32.00	7.92	STYLE A	NOTE 3	
91570-X03	13.00	7.92	STYLE A	NOTE 3	
91570-X04	14.50	7.92	STYLE A	NOTE 3	
91570-X05	16.00	7.92	STYLE A	NOTE 3	
91570-X06	24.00	7.92	STYLE A	NOTE 3	
91570-X07	28.90	7.92	STYLE A	NOTE 3	
91570-X08	32.00	12.70	STYLE A	NOTE 3	
91570-X09	14.50	12.70	STYLE A	NOTE 3	
91570-X10	16.00	12.70	STYLE A	NOTE 3	
91570-X11	11.50	12.70	STYLE A		
91570-X12	32.00	12.70	STYLE B	NOTE 3	
91570-X13	14.50	12.70	STYLE B	NOTE 3	
91570-X14	11.50	12.70	STYLE B		
91570-X15	32.00	7.92	STYLE B	NOTE 3	
91570-X16	14.50	7.92	STYLE B	NOTE 3	
91570-X17	16.00	7.92	STYLE B	NOTE 3	
91570-X18	24.00	7.92	STYLE B	NOTE 3	
91570-X19	16.00	12.70	STYLE B	NOTE 3	
91570-X20	11.50	7.92	STYLE B		
91570-X21	28.90	7.92	STYLE B	NOTE 3	
91570-X22	13.00	7.92	STYLE B	NOTE 3	

NOTE 5

NOTES:

- HOUSING SHOWN FOR APPLICATION CLARITY AND DOES NOT COME WITH POWER PINS AND PAN HEAD SCREWS
- TORQUE RATING FOR #4 STAINLESS STEEL COMBO PAN HEAD SCREW TO BE 5 IN/LBS. MAX
- MUST BE USED WITH THE METRAL(tm) PASS-THRU POWER CONTACT P.N. 91877
- TORQUE RATING FOR #4 BRASS SLOTTED PAN HEAD SCREW TO BE 3.75 IN/LBS. MAX.
- ADD "LF" SUFFIX AT THE END OF PART NUMBER FOR LEAD FREE OPTION.
- THIS PRODUCT MEETS EUROPEAN UNION DIRECTIVES AND OTHER COUNTRY REGULATION AS DESCRIBED IN GS-22-008.

-0YY	COMES WITH A BRASS SLOTTED PAN HEAD SCREW W/NICKEL PLATING	NOTE 4
-1YY	COMES WITH A STAINLESS STEEL COMBO PAN HEAD SCREW	NOTE 2

mat'l. code		surface ISO 1302 ✓		tolerance ISO 406 ISO 1101		projection 		product family METRAL ACC.	
ltr	ecn	no	dr	date	tolerances unless otherwise specified		title		
R					angles	linear	xx ±.01/.3	POWER PIN ASSEMBLY	
					0°±2'		xxx ±.005/.13	12 mm	
							xxxx ±.0020/.050	scale 1:1	
			dr	STU STONER	12/12/91			dwg no	
			enfr	R. DOUTRICH	12/12/91			sheet 2 of 2	
			chr	STU STONER	12/12/91			size	
			appd	STU STONER	12/12/91			A3	
sheet index		revision sheet						type Product Customer Drawing	



FCIconnect.com

Copyright FCI