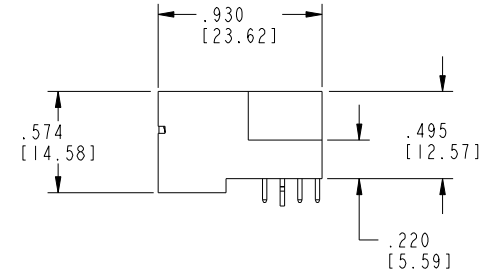
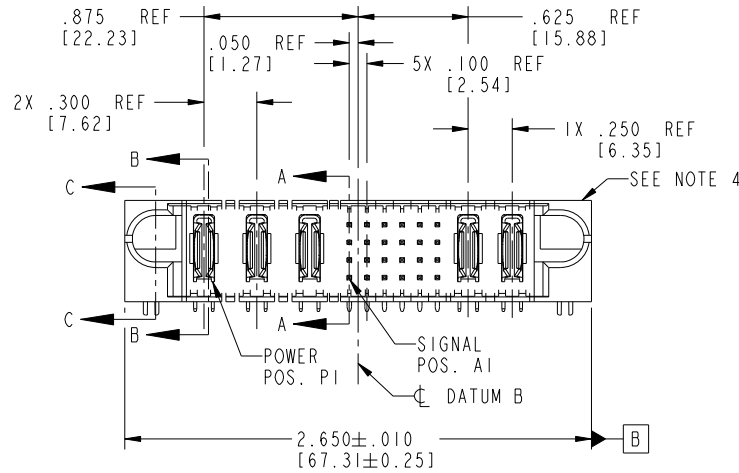
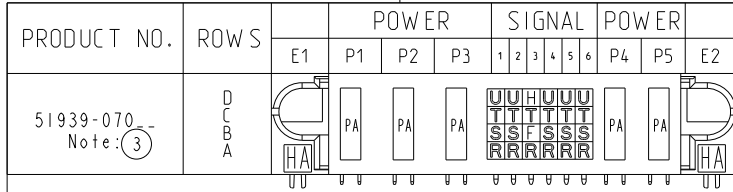


Tous droits strictement reserves. Reproduction ou communication a des tiers interdite sous quelque forme que ce soit sans autorisation écrite du propriétaire. Propriete de c FCI. Droits de reproduction FCI.



All rights strictly reserved. Reproduction or issue to third parties in any form whatever is not permitted without written authority from the proprietor. Property of FCI. Copyright FCI.



CODE	DIM "M" MATING LENGTH	CONTACT TYPE
U	.270 [6.86]	SIGNAL
T	.270 [6.86]	SIGNAL
S	.270 [6.86]	SIGNAL
R	.270 [6.86]	SIGNAL
PA	N/A [N/A]	POWER
HA	N/A [N/A]	HOLD-DOWN
H	.220 [5.59]	SIGNAL
F	.220 [5.59]	SIGNAL

mat'l code				SEE NOTE 2		tolerances unless otherwise specified		CUSTOMER		 www.fciconnect.com		
ltr	ecn no.	dr	date	linear	.XX±.01/0.X±0.3		COPY		title			
A	V03-0686	MEM	6/18/03		.XXX±.005/0.XX±0.13		projection		3ACP + 24S + 2P			
B	V03-0790	MEM	7/16/03	angles	.XXX±.002/0.XXX±0.051				RIGHT ANGLE SOLDER HEADER			
C	V03-0897	MEM	8/12/03		0°±2°				product family PwrBlade code			
D	DG05-0112	JMG	05/18/05	dr	M. MOSTOLLER	6/18/03	INCH/MM		size	213	sheet	
E	DG06-0014	JMG	01/12/06	engr	M. MOSTOLLER	6/18/03	scale		dwg no	1 of 4		
F	DG08-0273	WD	01/02/09	chr	H. BREWBAKER	6/18/03	1:1		51939-070			
sheet index				revision	F	F	F	F	cage code			4
				sheet	1	2	3	4	22526			

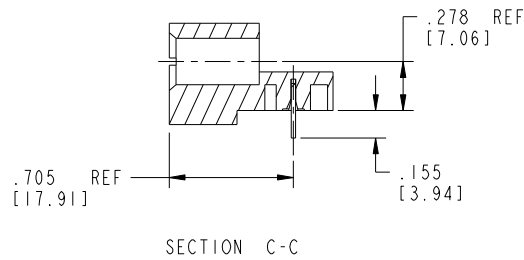
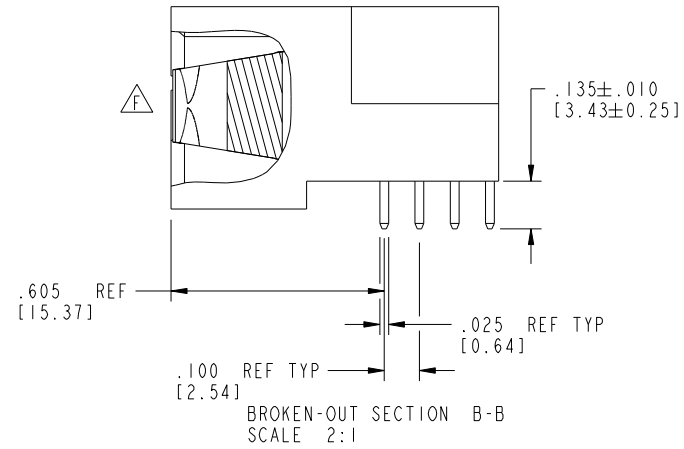
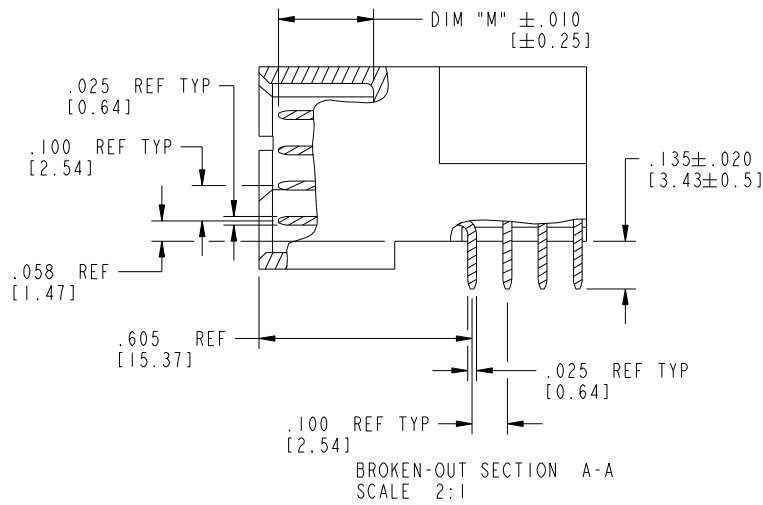
Pro/E

cage code 22526

Tous droits strictement réservés. Reproduction ou communication à des tiers interdite sous quelque forme que ce soit sans autorisation écrite du propriétaire. Propriété de c.FCI. Droits de reproduction FCI.

All rights strictly reserved. Reproduction or issue to third parties in any form whatsoever is not permitted without written authority from the proprietor. Property of FCI. Copyright FCI.

PRODUCT NUMBER
51939-070--
Note: (3)



mat'l code		SEE NOTE 2		tolerances unless otherwise specified		CUSTOMER		FCI		www.fciconnect.com	
ltr	ecn no.	dr	date	linear	.XX±.01/0.X±0.3	COPY		projection		title	
F					.XXX±.005/0.XX±0.13	INCH/MM		3ACP + 24S + 2P		RIGHT ANGLE SOLDER HEADER	
				angles	.XXX±.0020/0.XXX±0.051	scale		product family		code	
				dr	0°±2°	1:1		PwrBlade		213	
				enrg	M. MOSTOLLER 6/18/03			size		sheet	
				chr	M. MOSTOLLER 6/18/03			dwg no		2 of 4	
				appd	H. BREWBAKER 6/18/03			A		51939-070	
sheet index		revision sheet									

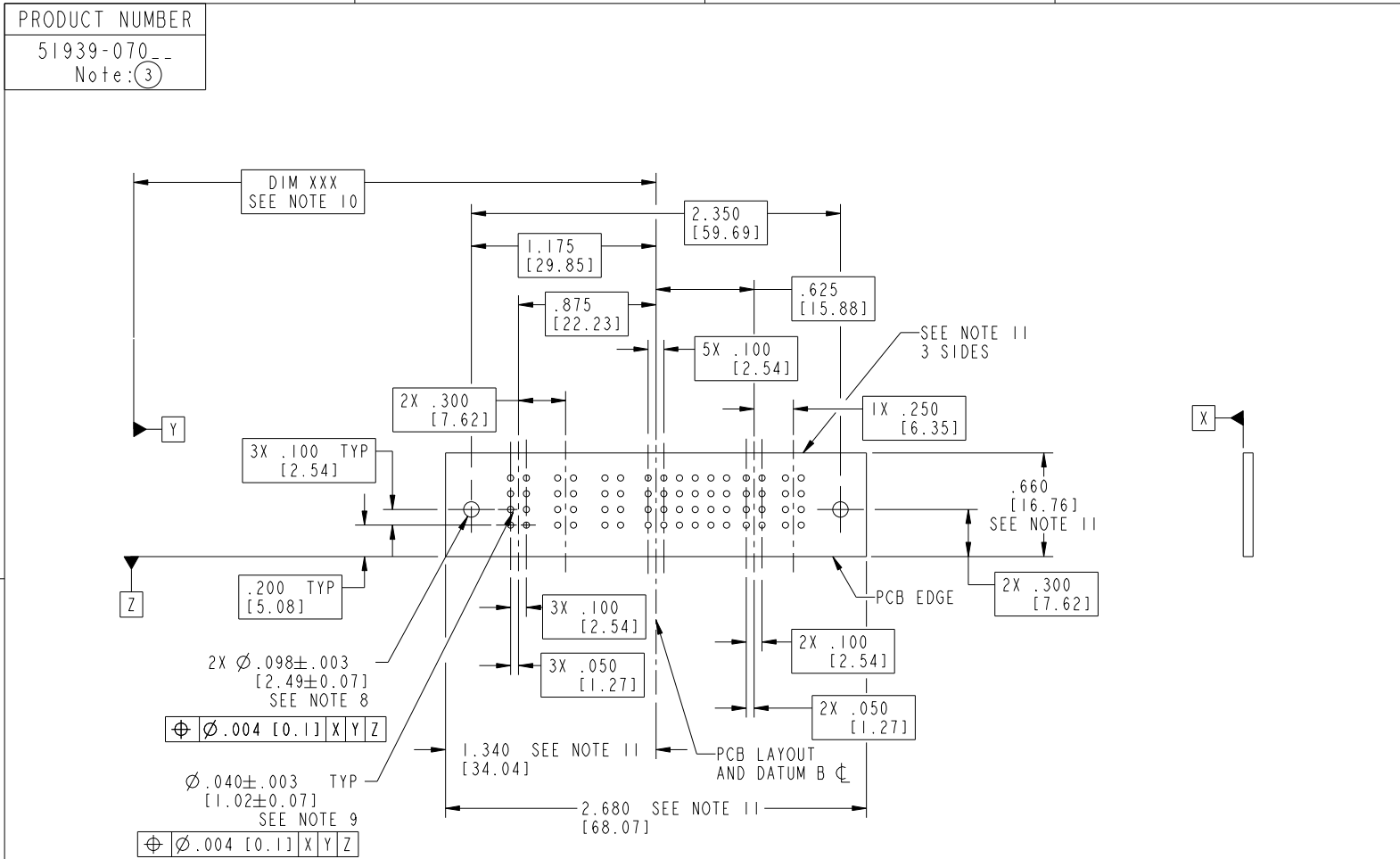
cage code 22526

Pro/E

Tous droits strictement reserves. Reproduction ou communication a des tiers interdite sous quelque forme que ce soit sans autorisation écrite du propriétaire. Propriete de c FCI. Droits de reproduction FCI.



All rights strictly reserved. Reproduction or issue to third parties in any form whatever is not permitted without written authority from the proprietor. Property of FCI. Copyright FCI.



RECOMMENDED PCB LAYOUT

mat'l code		SEE NOTE 2		tolerances unless otherwise specified		CUSTOMER		 www.fciconnect.com		
ltr	ecn no.	dr	date	linear	.XX±.01/0.X±0.3		COPY		 title 3ACP + 24S + 2P RIGHT ANGLE SOLDER HEADER	
F					.XXX±.005/0.XX±0.13		INCH/MM			product family PwrBlade
					.XXX±.0020/0.XXX±0.051		scale 1:1			code 213
				angles	0°±2°				sheet 3 of 4	
		dr	M. MOSTOLLER	6/18/03						
		enrg	M. MOSTOLLER	6/18/03						
		chr	H. BREWBAKER	6/18/03						
		appd	M. MOSTOLLER	6/18/03						
sheet index	revision sheet									

cage code 22526

Tous droits strictement reserves. Reproduction ou communication a des tiers interdite sous quelque forme que ce soit sans autorisation ecrite du propriétaire. Propriete de c FCI. Droits de reproduction FCI.



All rights strictly reserved. Reproduction or issue to third parties in any form whatever is not permitted without written authority from the proprietor. Property of FCI. Copyright FCI.

PRODUCT NUMBER
51939-070--
Note: (3)

NOTES:

1. DIMENSIONS AND TOLERANCES ARE IN ACCORDANCE WITH ASME Y14.5M, 1994 UNLESS OTHERWISE SPECIFIED.

CONNECTOR NOTES:

- (2) HOUSING MATERIAL: UL 94 V-0 GLASS FILLED HIGH-TEMP THERMOPLASTIC
POWER CONTACT MATERIAL: COPPER ALLOY
SIGNAL PIN MATERIAL: COPPER ALLOY
- (F) 3. SEE ITEM 1 & 2 IN PRINT 10064183 FOR PLATING SPEC OF 51939-070 AND 51939-070LF RESPECTIVELY.
- (4) MANUFACTURER'S NAME, P/N, AND DATE CODE TO APPEAR ON THIS SURFACE.
- 5. PRODUCT SPECIFICATION GS-12-149.
APPLICATION SPECIFICATION BUS-20-067.
- 6. PACKAGED IN TRAYS.
- PCB NOTES:
- 7. ALL HOLE DIAMETERS ARE FINISHED HOLE SIZE.
- (8) MOUNTING HOLES, WHERE APPLICABLE, ARE UNPLATED.
- (9) $\varnothing .0453 \pm .0010$ [1.151 \pm 0.025] DRILLED HOLES PLATED WITH
.0003 [0.008] MIN SnPb OVER .001 [0.03]
TO .003 [0.08] Cu PLATING TO ACHIEVE
 $\varnothing .040 \pm .003$ [1.02 \pm .07] HOLE.
- (10) "DIM XXX" TO BE DETERMINED BY THE CUSTOMER.
- (11) CONNECTOR KEEP-OUT ZONE.
- 12. (F) SYMBOL WILL BE NEXT TO ANY DIMENSION, VIEW, OR NOTE WHICH HAS BEEN MODIFIED WITH THE CURRENT DRAWING REVISION.

mat'l code		SEE NOTE 2		tolerances unless otherwise specified		CUSTOMER		FCI		www.fciconnect.com	
ltr	ecn no.	dr	date	linear	.XX+ .01/0.X+0.3	COPY					
F				projection	.XXX+ .005/0.XX+0.13	title		3ACP + 24S + 2P			
				angles	.XXX+ .002/0.XXX+0.051	RIGHT ANGLE SOLDER HEADER					
				dr	0°+2°	product family		PwrBlade		code	
				enrg	M. MOSTOLLER 6/18/03	INCH/MM		size		213	
				chr	M. MOSTOLLER 6/18/03	scale		dwg no		sheet	
				appd	H. BREWBAKER 6/18/03	1:1		A 51939-070		4 of 4	
sheet index		revision sheet									

cage code 22526