

PRODUCT NUMBER  
20020110-XXXXXXLF

20020110- □ □ □ □ A 0 □ L F

PITCH  
C: 3.50 mm  
D: 3.81 mm  
G: 5.00 mm  
H: 5.08 mm

POLES  
02: 2 POLES  
03: 3 POLES  
04: 4 POLES  
—  
24: 24 POLES

LF : DENOTED RoHS COMPATIBLE

1 : STANDARD PRODUCT W/ BOX PACKING

PROPERTY TABLE				
FCI SERIES NAME	06-350	06-381	06-500	06-508
PITCH (mm)	3.50	3.81	5.00	5.08
VOLTAGE RATING (VAC)	300	300	300	300
CURRENT RATING (A)	10	10	12	12
WITHSTANDING VOLTAGE (kV)	1.6	1.6	1.6	1.6
OPERATING TEMP. (°C)	-40~+115	-40~+115	-40~+115	-40~+115
SOLDERING TEMP. (°C)	250±10 (5 sec.)	250±10 (5 sec.)	250±10 (5 sec.)	250±10 (5 sec.)
POLES AVAILABLE	02~24	02~24	02~24	02~24
SAFETY CERTIFICATE				

HOUSING CODE

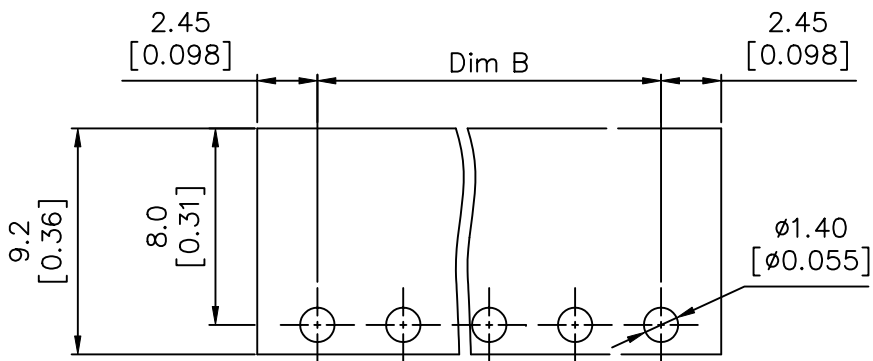
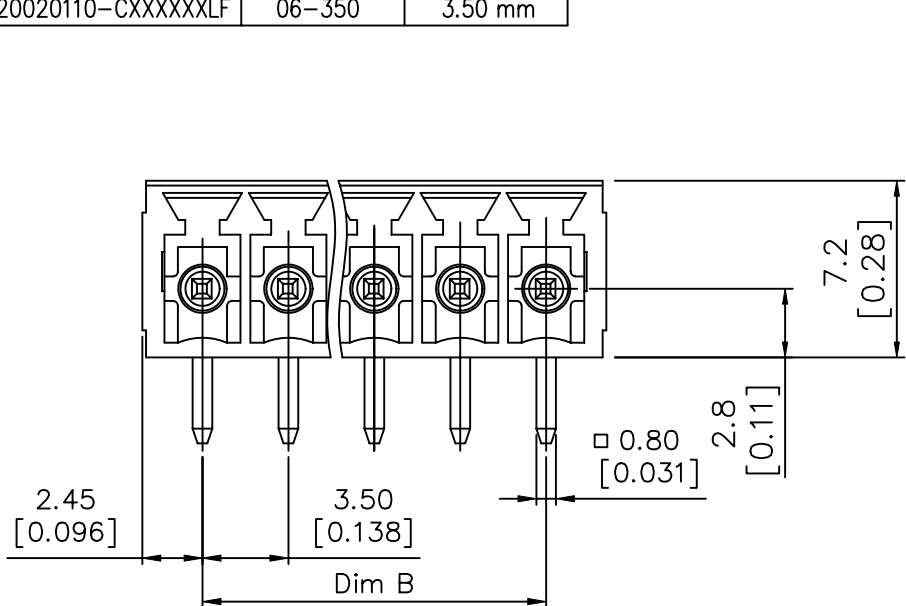
CODE	COLOR	AVAILABILITY
1	GREEN(RAL 6018/T)	STANDARD
2	BLACK	ON REQUEST ONLY
3	GREY(RAL 7004/P)	ON REQUEST ONLY
4	BLUE(RAL 5015/A)	ON REQUEST ONLY

- NOTES:
- MATERIALS  
1-1 HOUSING: THERMALPLASTIC RESIN, UL 94V-0 RATED.  
1-2 TERMINAL: COPPER, TIN PLATED.
  - PRODUCTION SPECIFICATION REFER TO FCI GS-12-625.
  - BOXED PACKAGING.  
DETAILED PRODUCT PACKING SPECIFICATION REFER TO FCI GS-14-1394.
  - FCI, SAFETY CERTIFICATE LOGO AND SERIES NAME TO BE SHOWN ON PRODUCT SURFACE.
  - THE PRODUCTS WHERE THE PART NUMBER END IN "LF" MEET THE EUROPEAN UNION DIRECTIVE AND OTHER COUNTRY REGULATIONS AS DESCRIBED IN GS-22-008.
  - RECOMENDED SOLDERING PROCESS BY WAVE SOLDER.

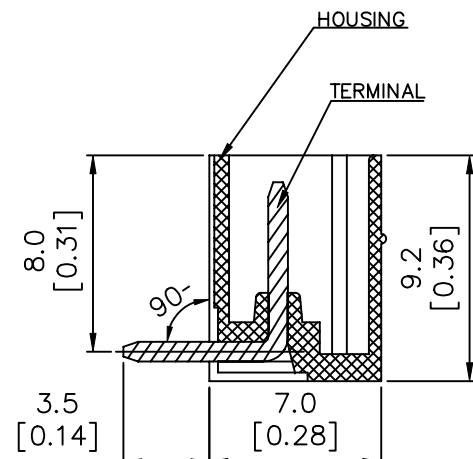
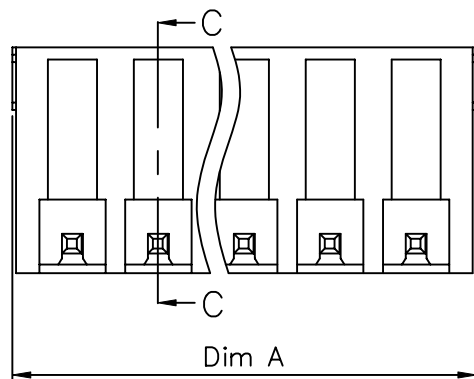
mat'l. code				surface ASME Y14.5 ✓		tolerance ASME Y14.5		projection		product family			
ltr				ecn no		dr		date		tolerances unless otherwise specified		title	
A				0609-0203		BF		062509		X.±0.5		TERMINAL BLOCK	
B				T09-1148		BF		111709		angles		TERMINAL BLOCK	
C				T09-1152		BF		112609		X'±1"		PLUGGABLE SOCKET, RIGHT ANGLE	
D				T10-0042		WL		030310		dr		BEER FU 062509	
E				T10-0109		WL		070810		enr		BEER FU 062509	
F				T10-0159		WL		100410		chr		GARY HSIEH 062509	
										appd		JOSEPH HSIA 062509	
sheet index		revision		F		F		F		F		type	
		sheet		1		2		3		4		CUSTOMER Drawing	



PRODUCT NUMBER	SERIES NAME	PITCH
20020110-CXXXXXXLF	06-350	3.50 mm



RECOMMENDED PCB LAYOUT



SECTION C-C

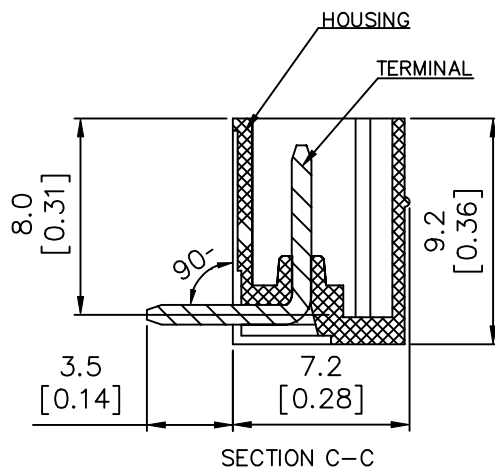
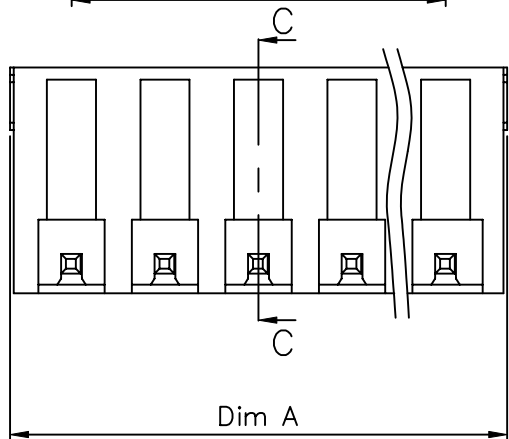
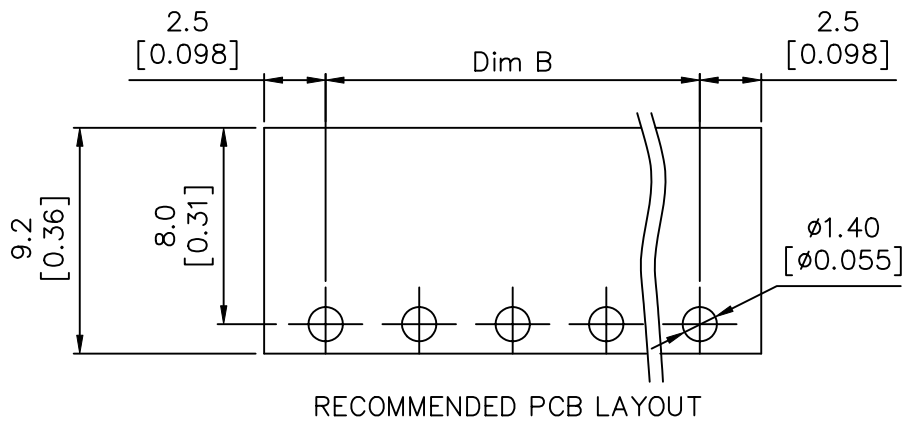
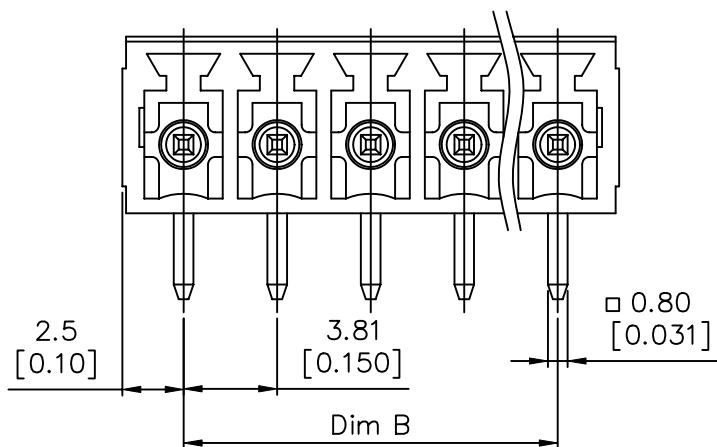
N = Number of poles  
 Dim A = Dim B + 4.9 [0.193]  
 Dim B = (N - 1) x 3.5 [0.138]

TOL.	Dim A	Dim B
2-6p	±0.15 [0.006]	
7-12p	±0.20 [0.008]	
13-18p	±0.25 [0.010]	
19-24p	±0.30 [0.012]	

mat'l. code		surface ASME Y14.5	tolerance ASME Y14.5	projection 	product family TERMINAL BLOCK
ltr	ecn no	dr	date	title	
F				TERMINAL BLOCK PLUGGABLE SOCKET, RIGHT ANGLE	
				scale MM [INCH]	dwg no 20020110
		dr	BEER FU 062509		sheet 2 of 5 size A4
		enr	BEER FU 062509		
		chr	GARY HSIEH 062509		
		appd	JOSEPH HSIA 062509		
sheet index	revision sheet			type CUSTOMER Drawing	



PRODUCT NUMBER	SERIES NAME	PITCH
20020110-DXXXXXXLF	06-381	3.81 mm

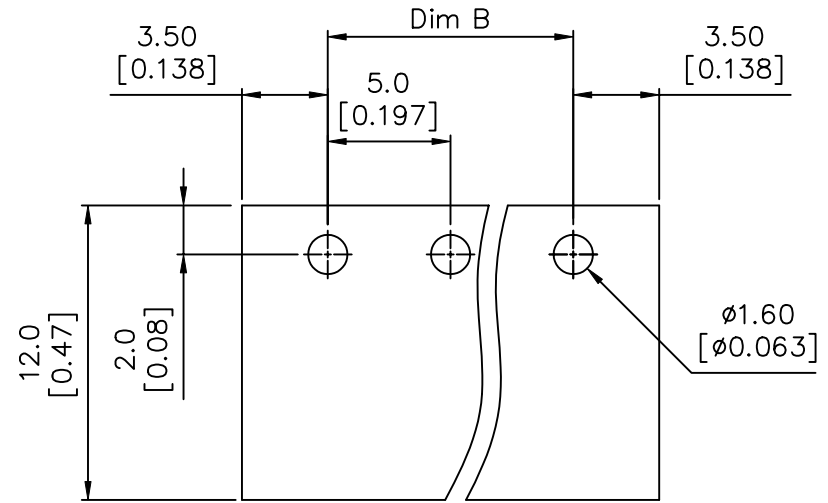
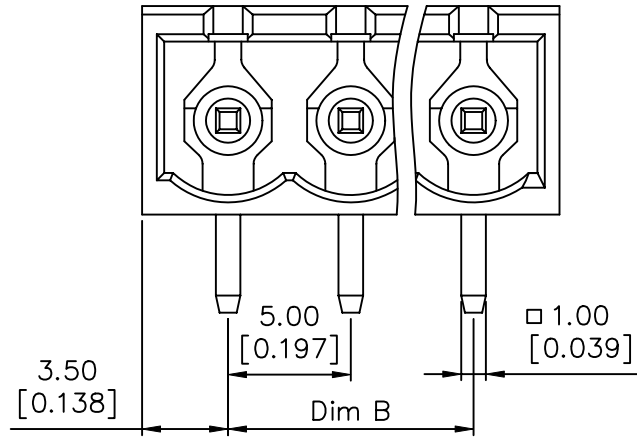


N = Number of poles  
 Dim A = Dim B + 5.0 [0.197]  
 Dim B = (N - 1) x 3.81 [0.150]

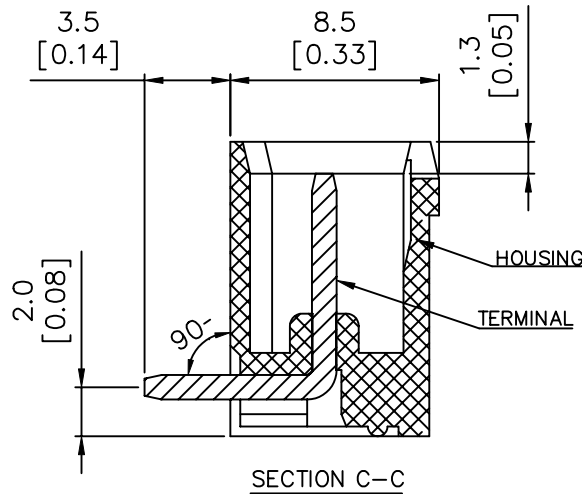
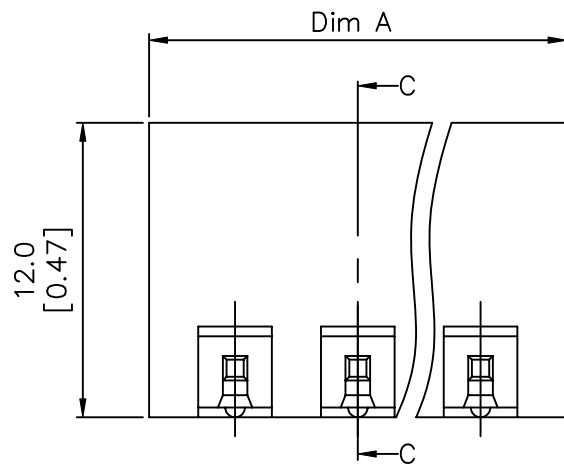
TOL.	Dim A	Dim B
2-6p	±0.15 [0.006]	
7-12p	±0.20 [0.008]	
13-16p	±0.25 [0.010]	
17-24p	±0.30 [0.012]	

mat'l. code		surface ASME Y14.5 ✓	tolerance ASME Y14.5	projection 	product family TERMINAL BLOCK
ltr	ecn no	dr	date	title	
F				TERMINAL BLOCK PLUGGABLE SOCKET, RIGHT ANGLE	
angles		tol	scale	dwg no	
X°±1'		X.±0.5	MM	sheet 3 of 5 size	
		X.X±0.3	[INCH]	20020110	
		X.XX±0.1	scale	A4	
dr		BEER FU	062509	type	
enr		BEER FU	062509	CUSTOMER Drawing	
chr		GARY HSIEH	062509		
appd		JOSEPH HSIA	062509		
sheet index	revision sheet				

PRODUCT NUMBER	SERIES NAME	PITCH
20020110-GXXXXXXLF	06-500	5.00 mm



RECOMMENDED PCB LAYOUT

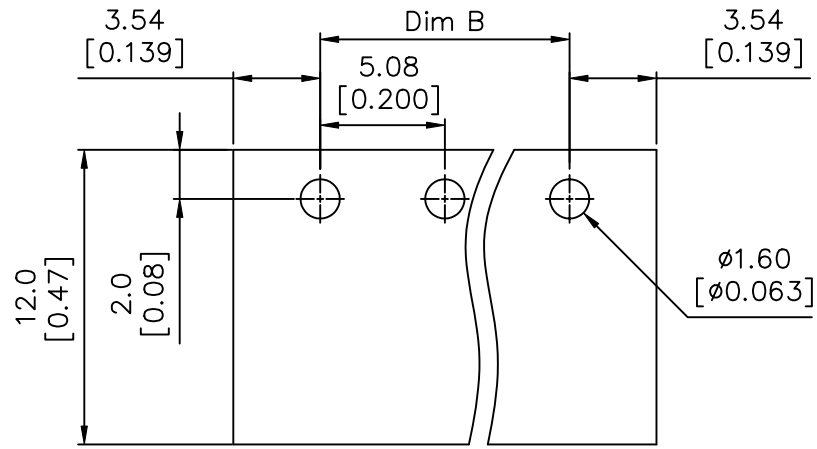
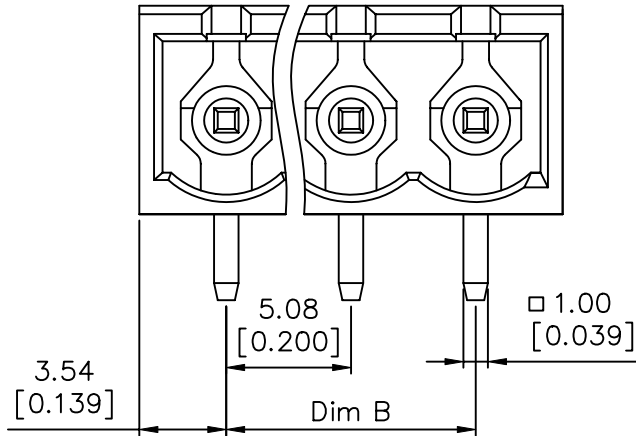


N = Number of poles  
 Dim A =  $N \times 5.0 [0.197] + 2.0 [0.193]$   
 Dim B =  $(N - 1) \times 5.0 [0.197]$

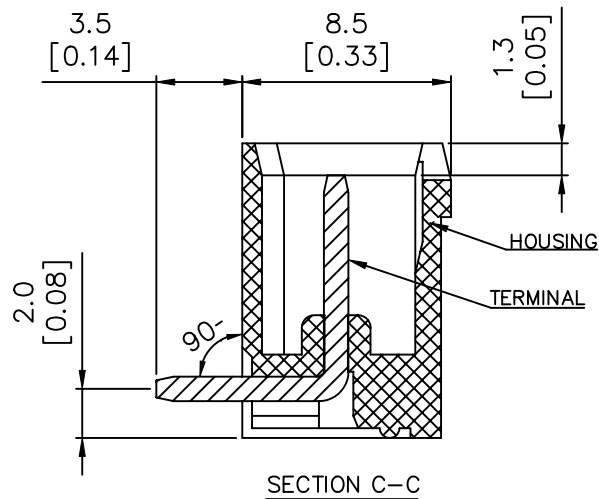
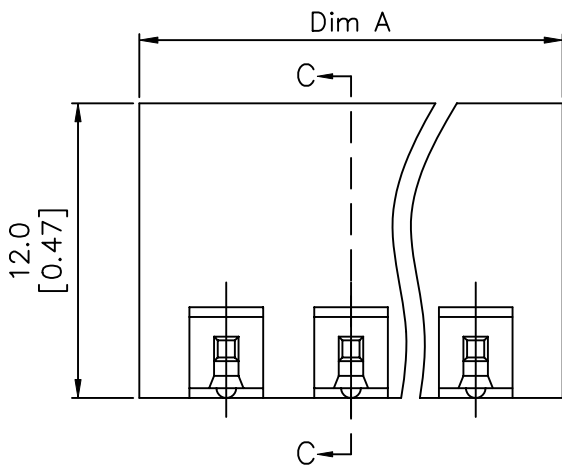
TOL.	Dim A	Dim B
2-6p	$\pm 0.15 [0.006]$	
7-12p	$\pm 0.25 [0.010]$	
13-16p	$\pm 0.35 [0.014]$	
17-24p	$\pm 0.40 [0.016]$	

mat'l. code	surface ASME Y14.5	tolerance ASME Y14.5	projection 	product family TERMINAL BLOCK
ltr	ecn no	dr	date	title
F				TERMINAL BLOCK PLUGGABLE SOCKET, RIGHT ANGLE
	angles	tol	scale	dwg no
	X°±1'	X.X±0.3	MM [INCH]	20020110
		X.XX±0.1		sheet 4 of 5 size
	dr	BEER FU	062509	A4
	enr	BEER FU	062509	type
	chr	GARY HSIEH	062509	CUSTOMER Drawing
	appd	JOSEPH HSIA	062509	
sheet index	revision sheet			

PRODUCT NUMBER	SERIES NAME	PITCH
20020110-HXXXXXXLF	06-508	5.08 mm



RECOMMENDED PCB LAYOUT



N = Number of poles  
 Dim A =  $N \times 5.08 [0.200] + 2.0 [0.193]$   
 Dim B =  $(N - 1) \times 5.08 [0.200]$

TOL.	Dim A	Dim B
2-6p	$\pm 0.15 [0.006]$	
7-12p	$\pm 0.25 [0.010]$	
13-18p	$\pm 0.35 [0.014]$	
19-24p	$\pm 0.40 [0.016]$	

mat'l. code	surface ASME Y14.5	tolerance ASME Y14.5	projection [Symbol]	product family TERMINAL BLOCK
ltr	ecn no	dr	date	title
F				TERMINAL BLOCK PLUGGABLE SOCKET, RIGHT ANGLE
				dwg no 20020110 sheet 5 of 5 size A4
				type CUSTOMER Drawing
sheet index	revision sheet			