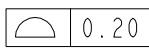
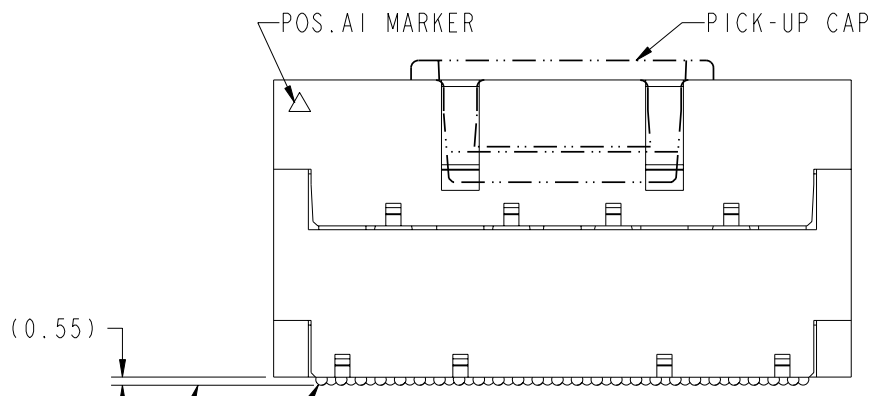
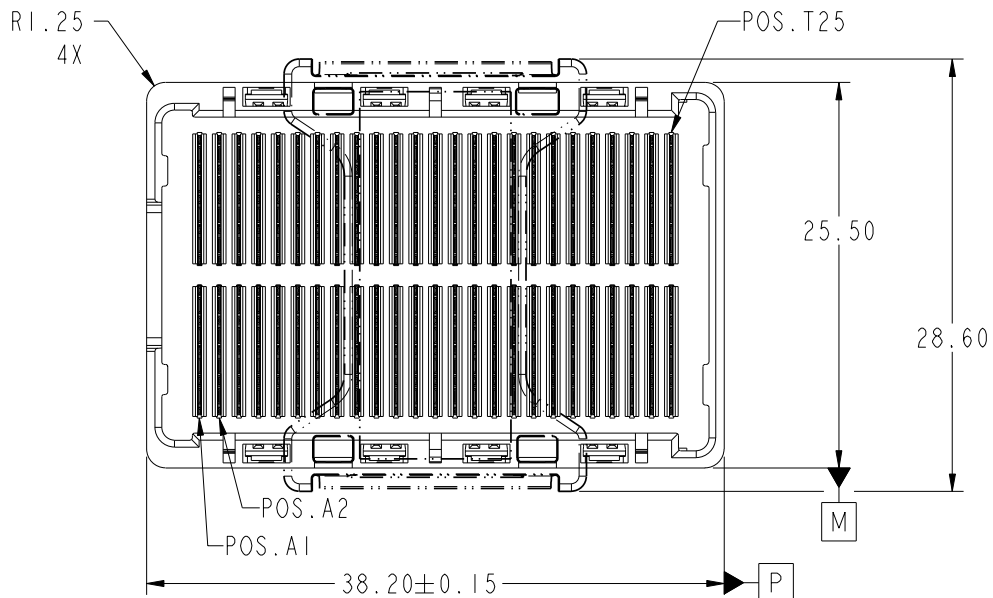




This document is the property of and embodies CONFIDENTIAL and PROPRIETARY information of FCI. No part of the information shown on this document may be used in any way or disclosed to others without the written consent of FCI. Copyright FCI.



Ø0.76 SOLDER BALLS
 ⊕ Ø0.30 P M
 450X
 SEE NOTE 2

mat'l code				SEE NOTE 1		tolerances unless otherwise specified		CUSTOMER		FCI	
ltr	ecn no.	dr	date	linear	0.X ± 0.3	COPY		projection		www.fciconnect.com	
A	V04-0481	TAB	2004-05-10	0.XX ± 0.10	MM		⊕		title GIG-Array		
B	V05-0052	VS	2005-10-16	0.XXX ± 0.050	←		⊕		20mm PLUG ASSY. 200 SIG. POS.		
C	V06-0558	LP	2006-06-12	0° ± 2°	scale		1:1		product family GIG-Array code		
D	V08-0329	SM	2008-11-15	dr	R. JOHNSON	2002-01-02			size		
				engr	D. JOHNESCU	2002-01-02			dwg no		
				chr	D. JOHNESCU	2002-01-02			A		
				appd	D. JOHNESCU	2002-01-02			55739		
				sheet					sheet		
				index					1 of 4		

Pro/E

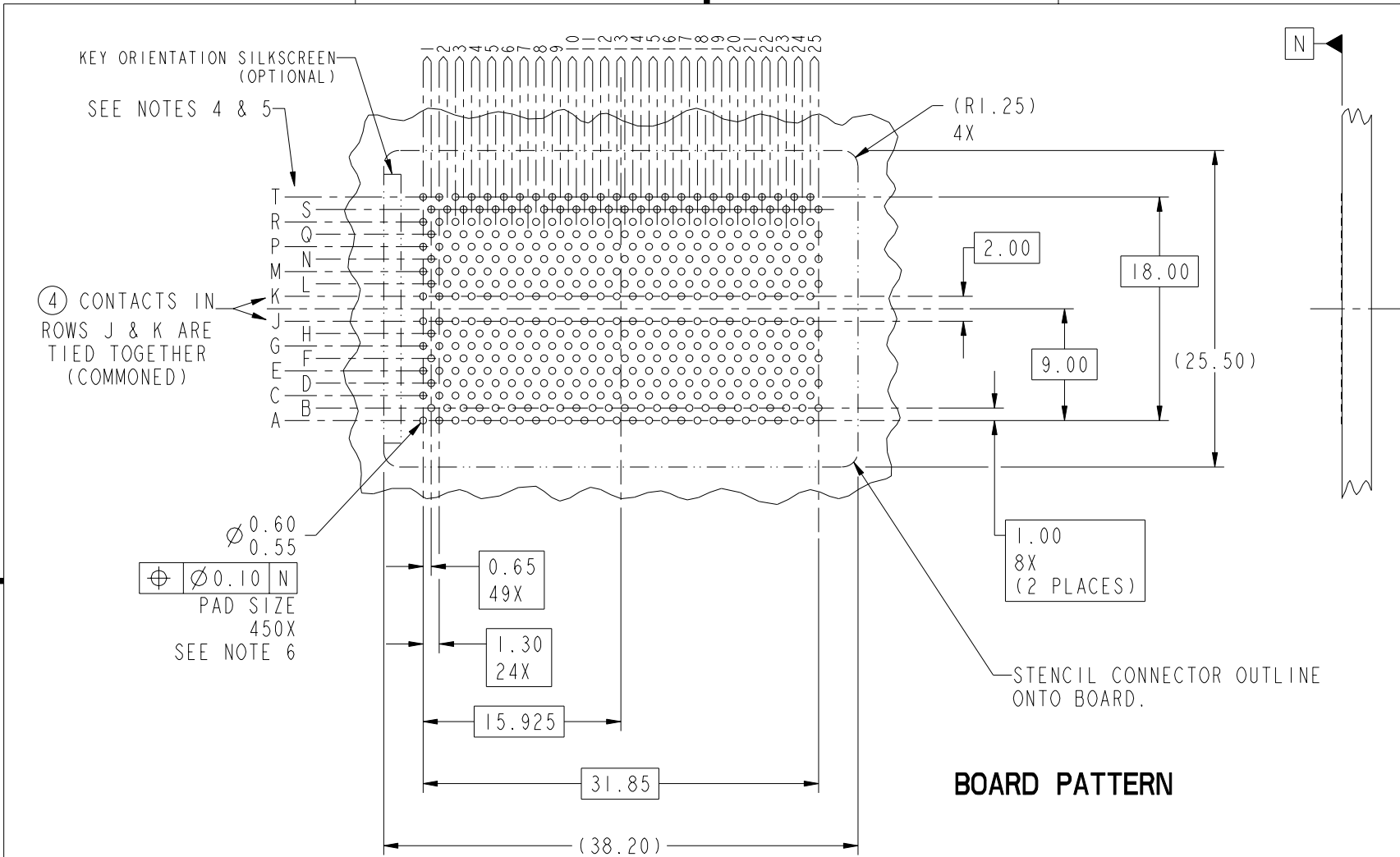
PDM: Rev:D

STATUS: Released

Printed: Sep_03_2010



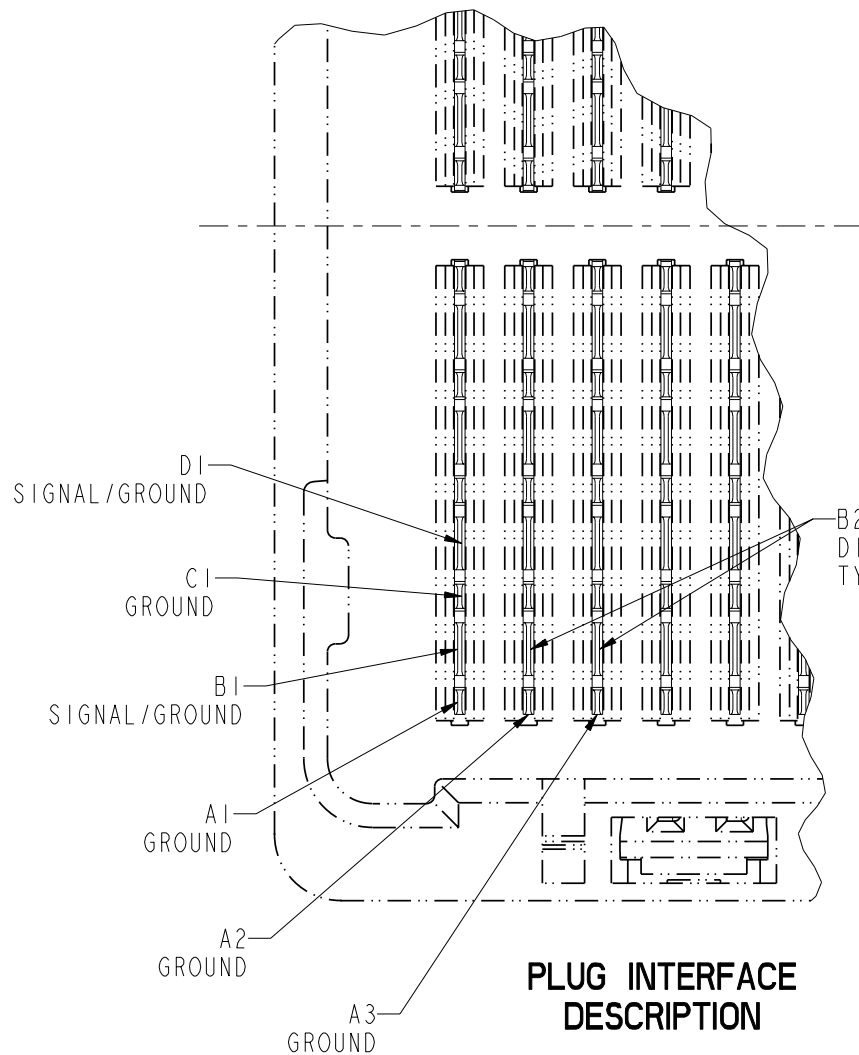
This document is the property of and embodies
 CONFIDENTIAL and PROPRIETARY information of FCI.
 No part of the information shown on this
 document may be used in any way or disclosed
 to others without the written consent of FCI.
 Copyright FCI.



mat'l code				SEE NOTE 1		tolerances unless otherwise specified		CUSTOMER		FCI www.fciconnect.com	
ltr	ecr no.	dr	date	linear	0.X ±0.3		COPY		title		
D	-	-	-		0.XX ±0.10		projection		GIG-Array		
					0.XXX ±0.050				20mm PLUG ASSY. 200 SIG. POS.		
				angles	0° ±2°				product family		code
				dr	R. JOHNSON	2002-01-02	MM		GIG-Array		213
				engr	D. JOHNESCU	2002-01-02	← MM →		size	dwg no	sheet
				chr	D. JOHNESCU	2002-01-02	scale		A	55739	2
				appd	D. JOHNESCU	2002-01-02	2:1				
sheet index	revision sheet										



This document is the property of and embodies CONFIDENTIAL and PROPRIETARY information of FCI. No part of the information shown on this document may be used in any way or disclosed to others without the written consent of FCI. Copyright FCI.



NOTES:

- ① MATERIAL:
 HOUSING: LCP
 CONTACT: COPPER ALLOY
 PLATING (CONTACT): Au OVER Ni.
 UL RATING: 94 V-0
 SOLDER BALL: (SEE TABLE) EUTECTIC SnPb OR LEADFREE 95.5 Sn/4Ag/0.5Cu
- ② SOLDER BALLS WILL NOT BE PERFECT SPHERICAL SHAPE DUE TO REFLOW ATTACHMENT.
- ③ MATED HEIGHT EFFECTED BY CUSTOMERS' PCB PAD SIZE, PLATING, SOLDER REFLOW PROFILE & SOLDER PASTE.
- ④ CONTACTS IN ROWS A,C,E,G,J,K,M,P,R AND T ARE SINGLE BEAM CONTACTS, TYPICALLY USED AS GROUND PINS. (NOTE: CONTACTS IN ROWS J & K ARE TIED TOGETHER [COMMONED])
- ⑤ CONTACTS IN ROWS B,D,F,H,L,N,Q AND S ARE DUAL BEAM CONTACTS, TYPICALLY USED AS SIGNAL PINS.

mat'l code				SEE NOTE 1		tolerances unless otherwise specified		CUSTOMER		FCI www.fciconnect.com	
ltr	ecr no.	dr	date	linear	0.X ±0.3		COPY		title GIG-Array 20mm PLUG ASSY. 200 SIG. POS.		
D	-	-	-		0.XX ±0.10		projection				
				angles	0.XXX ±0.050				product family GIG-Array code		
				dr	R. JOHNSON	2002-01-02	MM		size		213
				engr	D. JOHNESCU	2002-01-02			dwg no		sheet
				chr	D. JOHNESCU	2002-01-02	7:1		A		3
				appd	D. JOHNESCU	2002-01-02			55739		3
sheet index		revision sheet								B	

Pro/E

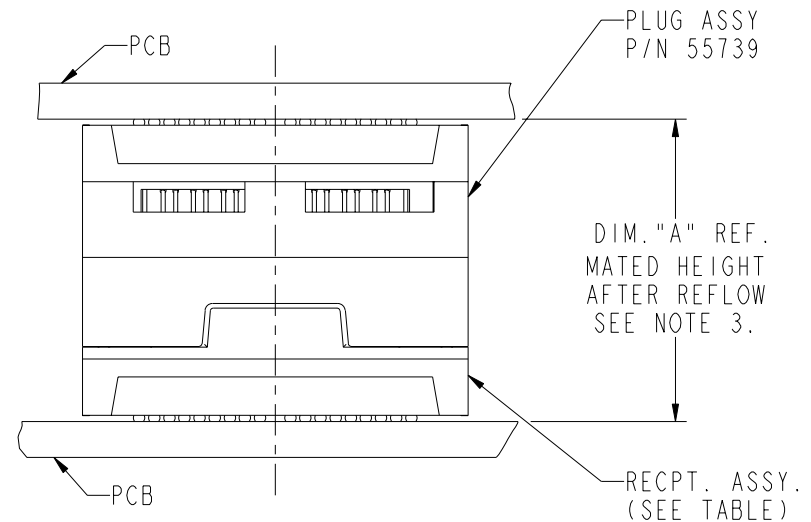
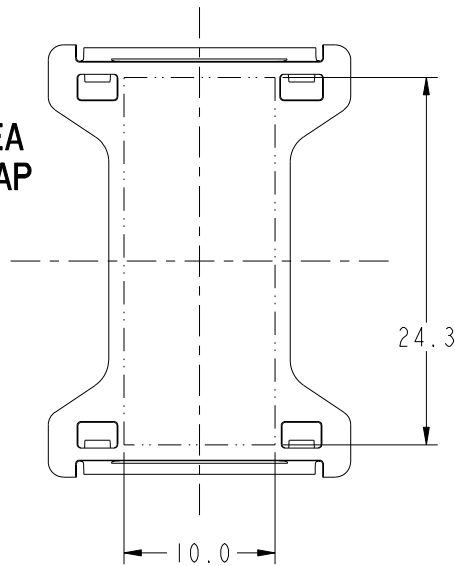
PDM: Rev:D

STATUS: Released

Printed: Sep_03_2010

PRODUCT NUMBER	SOLDER BALL
55739-001	SnPb
55739-001LF	SnAgCu LEADFREE (7)(8)

FLAT AREA PICK-UP CAP



END VIEW OF MATED CONNECTORS

DIM. "A"	RECPT. ASSY. P/N
25	55740
30	10026010
35	55741

NOTES CONTINUED

(6) SPECIFIED POSITIONAL TOLERANCE DEFINES PAD TO PAD LOCATION WITHIN LAND PATTERN. POSITIONAL TOLERANCE OF LAND PATTERN TO FUDICIAL MARKS OR PCB DATUMS SHALL BE DEFINED BY CUSTOMER. FOR RECOMMENDED PRODUCT APPLICATION AND PCB DESIGN DETAILS, SEE DOC. NO. GS-20-016.

(7) FOR PROPER APPLICATION FOLLOW FCI APPLICATION SPECIFICATION GS-20-033 LEADFREE SOLDER BALLS WILL NOT SOLDER PROPERLY IN A LEADED SOLDER PROCESS DUE TO A HIGHER REFLOW TEMPERATURE, LEADFREE PRODUCT IS THEREFORE NOT BACKWARDS COMPATIBLE WITH LEADED OR SOME SOLDERING APPLICATIONS. REFERENCE FCI APPLICATION SPECIFICATION.

(8) THIS PRODUCT MEETS THE EUROPEAN UNION DIRECTIVES AND OTHER COUNTRY REGULATIONS AS DESCRIBED IN GS-22-008. PRODUCT MEETING WITH THIS DIRECTIVE IS IDENTIFIED IN THE LOT CODE NUMBER MARKED ON EACH PART BY HAVING AN "X" IN THE SEVENTH CHARACTER POSITION.



This document is the property of and embodies CONFIDENTIAL and PROPRIETARY information of FCI. No part of the information shown on this document may be used in any way or disclosed to others without the written consent of FCI. Copyright FCI.

mat'l code		SEE NOTE 1		tolerances unless otherwise specified		CUSTOMER		FCI		www.fciconnect.com	
ltr	ecr no.	dr	date	linear	0.X ±0.3		COPY		title	GIG-Array	
D	-	-	-		0.XX ±0.10		projection			20mm PLUG ASSY. 200 SIG. POS.	
				angles	0.XXX ±0.050		MM		product family	GIG-Array	
					0° ±2°		← MM →			size	code
				dr	R. JOHNSON	2002-01-02	scale		size		213
				engr	D. JOHNESCU	2002-01-02	1:1			A	sheet
				chr	D. JOHNESCU	2002-01-02			55739		4
				appd	D. JOHNESCU	2002-01-02				cage code	
sheet index		revision sheet								22526	

Pro/E

PDM: Rev:D

STATUS: Released

Printed: Sep_03_2010